



Greater Pittsburgh Community Food Bank:
Community Connections Partnership Team
SNAP Application Assistance



THE MISSION:

To leverage the power of community to achieve lasting solutions to hunger and its root causes

THE VISION:

Communities where everyone has access to the food and resources they need to thrive

THE NETWORK:



In Fiscal Year
2023 we....



Direct to neighbor programs

Together with our network we...

42m
meals
distributed

12.5M
pounds
produce

summer meals
for kids
nearly **1.2M**
meals

our
network
31M + pounds of
groceries

SNAP
outreach
3.3M meals

afterschool
meals for kids
nearly **127,000**
meals and snacks

drive-up
distributions
4.3M + meals

The
Market
nearly **1M**
pounds of groceries



Community support

YOU helped meet the needs through...

Neighbors
Helping
Neighbors

6,900
volunteers

71,000 +
volunteer hours

Food
rescue
18.4M pounds

Community food
drive donations
125,900 +
pounds

Retail store
donations
7.6M + pounds

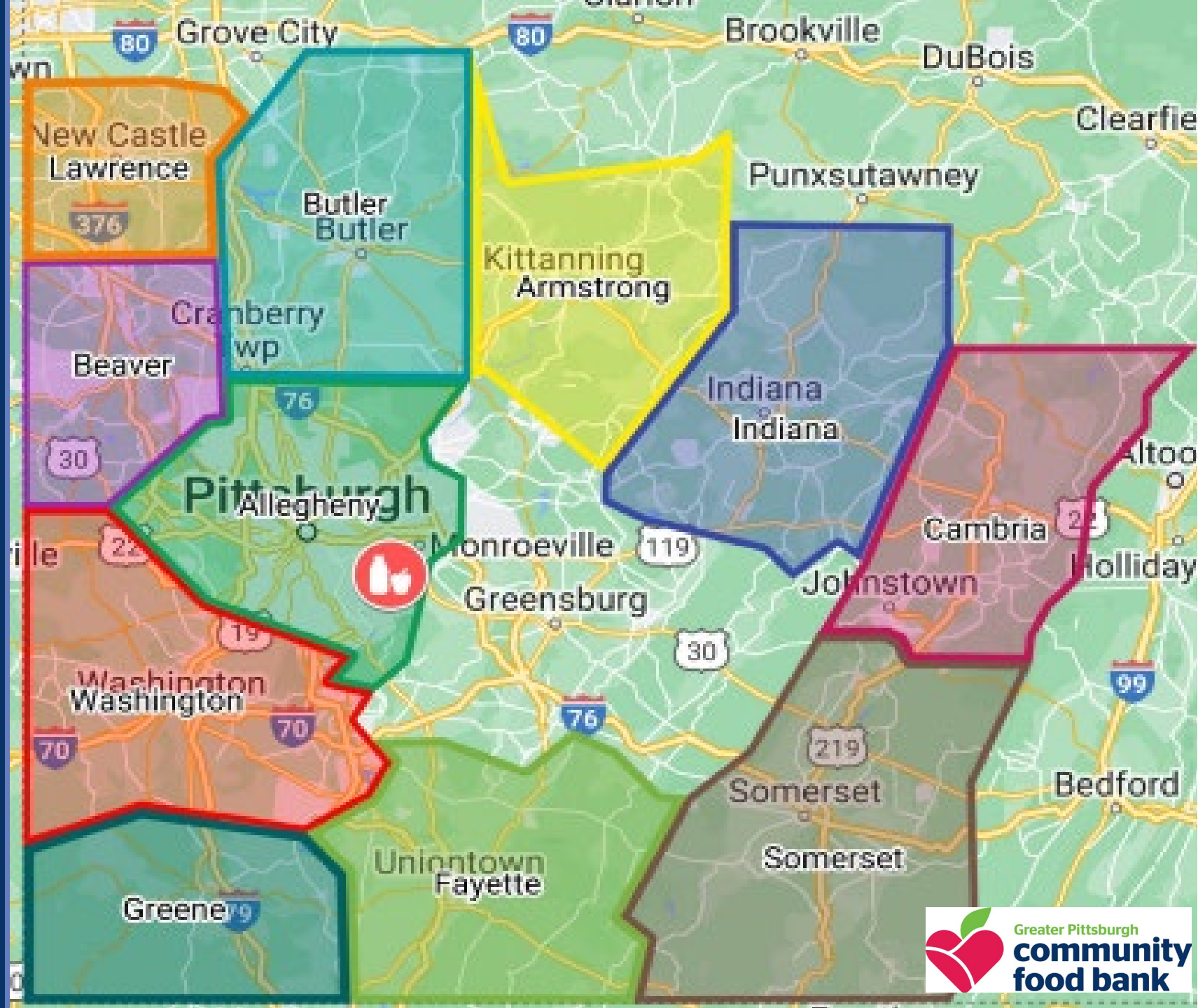
Community Table
donations
79,000 + meals



There when our neighbors need

Our Service Area

Allegheny	Greene
Armstrong	Indiana
Beaver	Lawrence
Butler	Somerset
Cambria	Washington
Fayette	



The Community Connections Team

We make SNAP benefits more accessible by providing one-on-one assistance and meeting people where they are in the community.

We also offer Food Bank programs information and resources beyond food.

Our Partnership team can provide information through presentations, tabling, materials, and more!



The Community Connections Team

In FY23 we:

Reached over 2,500 neighbors through outreach

Submitted 2,703 SNAP applications and over 1,000 other applications (LIHEAP, Medical Assistance, etc.)

Made over 1,700 resources beyond food referrals

Received over 17,000 calls from neighbors in our service area



Other Food Bank Programs:

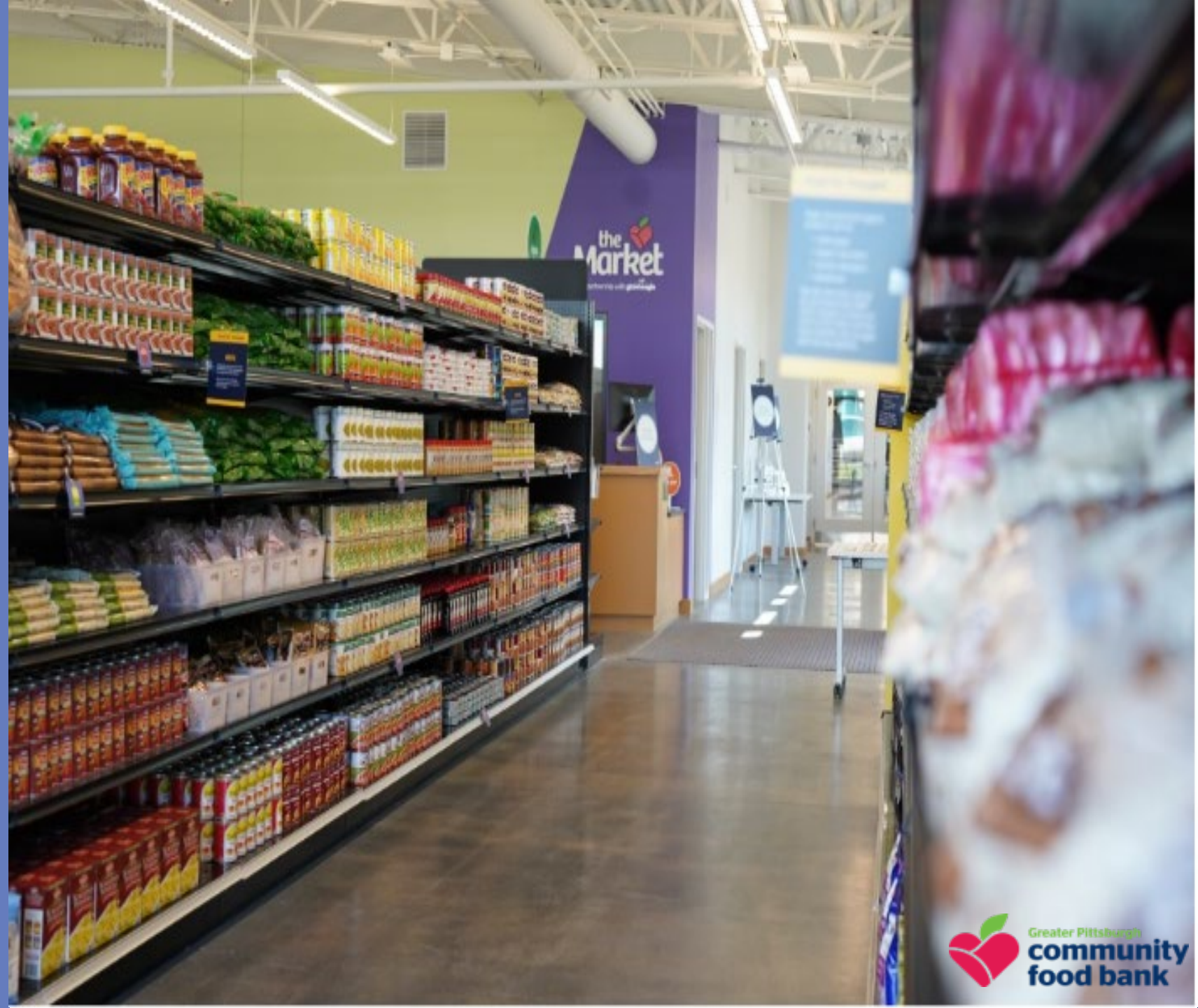
The Market

Drive-Up/ Walk-Up
Distributions

Child Nutrition Programs

Pantries and Pantry Locator

Senior Box Program



Why SNAP?

SNAP offers choices for dietary preferences or restrictions

SNAP puts money back into the community

SNAP reduces strain on pantries and other service organizations

SNAP supplements other food programs

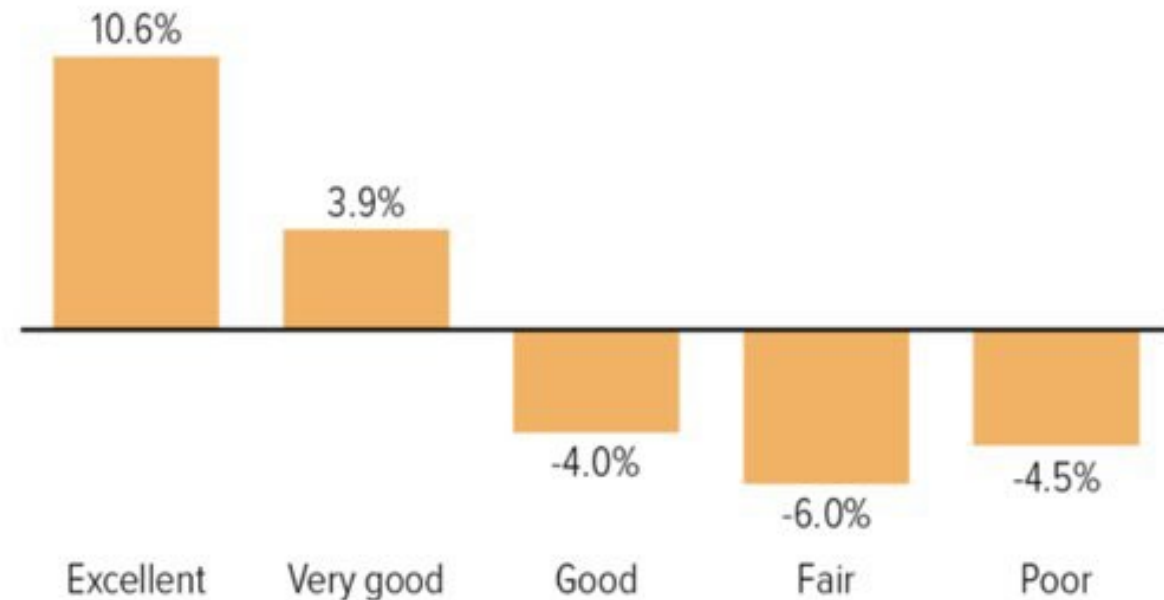
Signing up for SNAP can allow you to apply to other programs, such as reduced cost internet

SNAP provides flexibility in your budget to pay for other needs, such as medicine or utilities



SNAP Participants Report Better Health Than Eligible Non-Participants

Percent more or less likely to describe health as:



Source: Christian A. Gregory and Partha Deb, "Does SNAP Improve Your Health?" Food Policy, 2015. Adjusted for differences in demographic, socioeconomic and other characteristics. Sample includes adults aged 20 to 64 in households with income at or below 130% of the federal poverty level.

CENTER ON BUDGET AND POLICY PRIORITIES | CBPP.ORG

Did You Know?

Household Size	Maximum Gross Monthly Income for Households	Monthly Benefit Amount
1	\$2,430	\$23 – \$281
2	\$3,288	\$23 – \$516
3	\$4,144	up to \$740
4	\$5,000	up to \$939
5	\$5,858	up to \$1,116
Each additional family member	+\$858	up to +\$211

SNAP Income Guidelines
*Change every October

Eligibility: Factors

The benefit amount you receive is based on both your income and factors in these expenses:

Rent/mortgage

Utilities

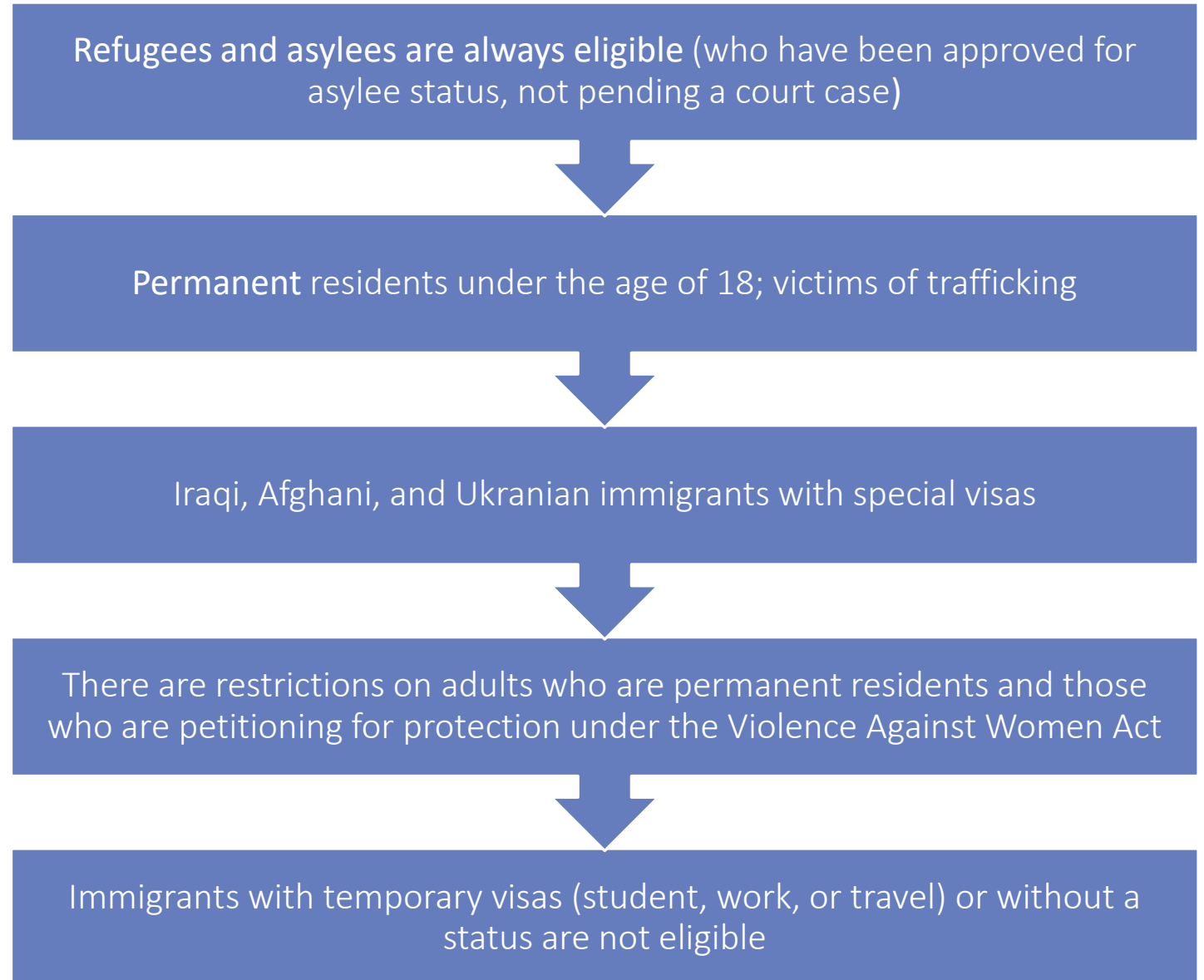
Child care or
dependent care

Child support

Medical costs for
people with
disabilities and for
elderly individuals

Eligibility: Non-Citizens

*Not a complete list of eligibility



Eligibility: College Students

*Not
a complete list
of eligibility

There are also additional restrictions on students, who can qualify if they meet the income rules AND an exemption like:

Have 20 hours per week of employment or equivalent in wages or have a work-study award and position

Have a child under 12 years old

Have a physical or mental health condition that limits employability

Enrolled in community college and the college can complete form showing that the student is in a program to improve their employability. (The program is in a high priority occupation, or funded through Carl D. Perkins Career and Technical Education Improvement Act of 2006)

How long does the application process take?

What is a renewal period?

Can I receive a Senior Box, WIC, etc. And SNAP at the same time?

Who is considered a part of my household?

Do I need to complete a phone interview?

We can help answer questions from neighbors like:

What can I buy with SNAP Benefits?

What?

Fruits and
vegetables

Meat, poultry, and
fish

Dairy products

Breads and cereals

Other foods such as
snack foods and
nonalcoholic
beverages

Seeds and plants
that produce food

Where?

Grocery stores

Superstores

Convenience
Stores

Pharmacies

Farmer's
Markets

Online with
participating
stores

What can I buy
with \$23?



What can I buy
with \$23?

Proteins



What can I buy with \$23?

Vegetables



What can I buy with \$23?

Plant-Based



What can I buy
with \$23?

Gluten-Free



What can I buy
with \$23?

Unhoused, on-
the-go,
no equipment,
physical limitati
ons, etc.



What We Do

We Can:

Submit new
SNAP
applications

Submit SNAP
renewals

Apply for LIHEAP,
Childcare and
Medical benefits

Upload client
documents

We Cannot:

Approve applications

Modify active SNAP
cases

Send EBT cards, new
or lost

For question about
active cases and lost
cards, call 1-877-395-
8930

How We Do It

Call 833-822-7627:

- Connect with one of our telephonic coordinators and they will submit an application for you
- If you reach our voicemail, leave a message with your name, county and a specific day and time to reach you



Reach Us Online

pittsburghfoodbank.org/SNAP

Go to the "Find Food" button at the top of our website

Select SNAP from the menu on the right

Complete the online form and our staff will be notified

One of our skilled application assistants will call you within 2-3 business days.

Interested in SNAP? We Can Help!

If you meet the income guidelines, fill out the form below and we will call you to complete a SNAP application over the phone.

Call: 1-833-822-SNAP (7627)

Email: snap@pittsburghfoodbank.org

Your Name *
First Last

Your Email

Your Phone Number *

May we text you? * ▼

What county do you live in? (Don't see your county? Please select other.) * ▼

Zip Code *
0 of 5 max characters

How did you hear about us? *

What is the best time for us to call you?

Life Stabilization

In addition to helping you apply for SNAP, we can also help you see if you are eligible for health care and LIHEAP benefits. LIHEAP is available during the winter months to assist in paying for heating bills.

We have many partners whom we can refer you to for other programs such as:

- Employment
- Utility Assistance
- Health Care
- Housing
- Applying for disability
- Many more options

Please let us know what other resources we could help connect you to, or click [here](#) for our resource page

Become a Referral Partner

You will receive a [link](#) to use to refer your neighbors to us to apply for or renew SNAP.

You can use this link during intake, on your websites, or social media to help your neighbors apply for SNAP.

When this link is used, the Greater Pittsburgh Community Food Bank will know it is from your agency and can provide referral reporting.



Let's Collaborate!

General Collaboration: Chris West (Director):

cwest@pittsburghfoodbank.org

Allegheny and General Collaboration:

Samantha Serrano (Supervisor)

sserrano@pittsburghfoodbank.org

Cambria, Indiana: Justin Kurtz (Coordinator)

jkurtz@pittsburghfoodbank.org

Beaver/Butler: Patricia Ferricks (Coordinator)

pferricks@pittsburghfoodbank.org



I'm a Student. Can I get SNAP?

Yes, as long as you—



✓	<p>Meet all normal SNAP eligibility requirements, such as the income limits. Your financial aid and/or work-study earnings are <u>not</u> counted.</p> <p><i>NOTE:</i> If you are 21 or younger and live at home with your parent(s), their income must be considered when determining your eligibility.</p>
AND	
✓	<p>Do not have a meal plan –or– you have a meal plan that provides 10 or fewer meals per week averaged over the course of a semester.</p>
AND	
✓	<p>Qualify for at least one of the following student exemptions:</p> <p><u>Exemptions based on Enrollment Status</u></p> <ul style="list-style-type: none">• Attending high school;• Enrolled in school less than half-time, as determined by your school; or• Attending a school or training program that is <u>not</u> an institution of higher education, meaning a school (or special curriculum at a college) which doesn't require you have a high school diploma or GED to enroll. <p><u>Exemptions based on Age or Disability</u></p> <ul style="list-style-type: none">• Under age 18;• Age 50 or older; or• Physically or mentally unfit. <p><u>Exemptions based on being a Parent or Caretaker</u></p> <ul style="list-style-type: none">• Receiving TANF benefits;• Caring for a child under age 6;• Caring for a child age 6-11 if childcare is unavailable; or• Single parent caring for a child age 6-11 <u>and</u> going to school full-time. <p><u>Exemptions based on Work or Training</u></p> <ul style="list-style-type: none">• Working 20 hours per week;• Self-employed and earning at least \$145 per week;• Participating in a work-study program, regardless of hours or earnings;• Participating in an on-the-job-training program (OJT); or• Enrolled in school through certain workforce development programs. <p><u>Special Exemption for Community College Students Only</u></p> <ul style="list-style-type: none">• Be enrolled in certain career-driven majors or courses of study. Your school can verify you meet this criterion by completing this form. <p><u>Special Exemption for Programs that Increase Employability</u></p> <ul style="list-style-type: none">• Be enrolled in school through or in compliance with a DHS-approved state or local program to increase employability (approved programs).

Pennsylvania's Expansion Pennsylvania Hunger –Free Campus Initiative

- **Students who participate in programs that meet the following criteria may now receive SNAP if otherwise eligible:**
 - Program primarily serves students from low-income households
 - Program is operated by a state or local government, or an instrumentality thereof, **and**
 - Program provides equivalent of at least one allowable activity under SNAP E&T
 - [Information on SNAP Eligibility and COMPASS Partnership \(youtube.com\)](#)

Pennsylvania's Expansion (cont)

Students enrolled in an IHE *through* programs that increase employability:

TRIO Upward Bound

GEARUP

ELECT

Title II Adult Basic Education

Chafee Education and Training Grant

Pennsylvania's Expansion (cont)

Students *in compliance with* programs that increase employability:

Act 101 Programs

Fostering Independence Tuition
Waiver (FosterEd)

Programs At-A-Glance

Chafee Education and Training Grant (Chafee ETG) Program

- Enacted into federal law as the Foster Care Independence Act of 1999
 - Amended with the Promoting Safe and Stable Families Amendments of 2001
- Program provides grants to undergraduate students aging out of foster care who are attending an approved postsecondary institution
- Jointly administered in PA by PHEAA and the Pennsylvania Department of Human Services (DHS)
 - Federal allotment provided to DHS through the Education and Training Voucher (ETV)

PA Fostering Independence Tuition Waiver (FosterEd) Program

- Commonwealth program enacted into law under Act 16 of 2019
 - Amended by Act 91 of 2019 to require students to apply for federal and state grants
- Removes barriers in accessing postsecondary education for youth who are or have been in foster care
 - Waives tuition and mandatory fees for eligible students
- Jointly administered by PHEAA and the PA departments of Education (PDE), Human Services (DHS), and Labor & Industry (L&I)
- No Commonwealth appropriation

Eligibility Criteria

To be eligible for [Chafee ETG and/or FosterEd](#), a student must:

- Be a resident of Pennsylvania who meets the program's age requirement (under the age of 26)
- Possess a high school diploma or Commonwealth Secondary School Diploma
- Be eligible for services under Pennsylvania's John H. Chafee Foster Care Program for Successful Transition to Adulthood
 - Be identified as a youth in foster care or a youth discharged, adopted from foster care, or exited foster care on or after age 16 due to permanent legal guardianship
- Not be in default on a federal student loan or owe a refund on other Title IV aid
- Maintain satisfactory academic progress (as determined by the postsecondary institution)
- File a Free Application for Federal Student Aid (FAFSA®) and submit the [Chafee ETG application](#) by the program's deadline

FosterEd Point of Contact (POC)

- Institutions **must** designate one or more staff as the POC
 - Each institution must determine who is most qualified for the role
 - Contact information for POC must be publicly available and posted online



PRIMARY STUDENT CONTACT

Serve as primary contact for potentially eligible foster youth applying to and attending the institution



FINANCIAL AID AND ELIGIBILITY ASSISTANCE

Assist students in attaining FosterEd eligibility, as well as ensure students apply for applicable federal, state, and/or other financial aid



RESOURCE REFERRALS

Provide students with information and referrals for **both** on-campus and off-campus resources (e.g., tutoring, mental health, medical insurance, transitional housing, etc.)

Questions?

Wendy Dunlap

**Higher Education Access Partner
PHEAA**

Wendy.Dunlap@pheaa.org

Sam Serrano

**Community Connections Partnership
Supervisor**

**Greater Pittsburgh Community Food
Bank**

sserrano@pittsburghfoodbank.org