

PRESIDENT

Barry W. McCarty
Lafayette College
(215) 250 - 5055

PRESIDENT ELECT

Donald Raley
Dickinson College
(717) 245 - 1308

VICE PRESIDENT

Renee Saleh
Kutztown University
(215) 683 - 4077

TREASURER

Mary Andrews Miller
Indiana University of
Pennsylvania
(412) 357 - 2296

SECRETARY

Sheila E. Angst
Albright College
(215) 921 - 2381

PAST PRESIDENT

W. Arthur Switzer
Villanova University
(215) 645 - 4010

COUNCIL**Public Two-Year**

Richard F. McCracken
Community College of
Philadelphia
(215) 751 - 8275

Private Two-Year

Lucretia K. Hill
Keystone Junior College
(717) 945 - 5141 ext. 280

Private Four-Year

Milosh Mamula
Allegheny College
(814) 724 - 4354

State-Related

John F. Brugel
Pennsylvania State University
(814) 865 - 6301

State-Owned

William F. Behrendt
California University of
Pennsylvania
(412) 938 - 4415

Proprietary

Rebecca I. Denova
School of Computer Technology
(412) 391 - 4197

Nursing

Rosemary A. Sweeny
Lankenau Hospital School
of Nursing
(215) 645 - 3275

FROM THE PRESIDENT:

Dear PASFAA Members:

I first want to inform the membership that Helen Nunn, PASFAA Treasurer, has resigned from PASFAA since she has accepted the position of Director of Financial Aid at the University of Charleston in West Virginia. We will miss Helen in Pennsylvania and wish her well in her new post. As you are aware, nominations for the treasurer's position were sought for election at our fall conference. I have asked our past-treasurer Mary Miller to serve as interim treasurer from July 1 through the conference. I was pleased to learn that Mary is willing to take on this responsibility in addition to her conference-planning activities.

I am pleased to report that your Executive Council has endorsed a toll-free telephone line project to be organized around 'Financial Aid Awareness' in January 1986. Contacts have been made with the Pennsylvania Association of Colleges and Universities and PHEAA to elicit their cooperation with this effort. Initial responses have been quite positive and I am pleased to report that Don Crewell of Lehigh has consented to chair the Committee which will be responsible for coordinating the publicity, volunteer coverage and technical arrangements for this project. Much more information will be forthcoming in the months ahead.

Your Executive Council considered the establishment of the fee structure for the 1985-86 year and for the 1985 Conference. I am pleased to note that the fees for membership in PASFAA will remain the same for the upcoming year: \$22 active, \$20 associate and \$10 student member. I should mention that the 1985 Conference fee will include several meals and for this reason will be higher than the 1984 fee when all meals were included within the hotel room charge. I hope you have noted on your calendar the dates September 29 through October 2 when PASFAA returns to Pittsburgh for the 1985 Conference. The Station Square complex offers an unusual and exciting facility for our association.

Given the delays with the Pell Payment Schedule and some uncertainties with other programs, I'm not sure the summer will be relaxing; but I do hope that all will have the opportunity to 'recharge the batteries' through some rest and relaxation. Please do not hesitate to contact me or other members of the Executive Council if concerns or recommendations should come to mind.

Respectfully,



Barry McCarty, President

EXECUTIVE COUNCIL NOTES

Council met on June 3 at the PHEAA Board Room, Harrisburg. Reports of various committees are included in this Newsletter. Council will next meet on Sunday, September 29 at 12:30 p.m., Sheraton Station Square, Pittsburgh, prior to the conference.

NOMINATIONS SOUGHT FOR OCTOBER ELECTION

by Art Switzer, Villanova University

Members received ballots and informational materials from membership and election committee chairman Art Switzer last month. Nominations were solicited for president-elect, for the remaining one-year term of treasurer, and for all council members-at-large (sector representatives): public two-year, private two-year, private four-year, state-related, state-owned, proprietary and nursing. Duties of each position were contained in the follow-up mailing. Terms for sector representatives are two years, with the term of president-elect and the remaining treasurer's term for one year.

The nominations and elections committee, made-up of current council members-at-large, is scheduled to meet July 20 to count nominations and set up the slate of candidates which will be announced in the August PASFAA Newsletter.

COUNCIL REVIEWS MEMBERSHIP AND SETS DUES

by Art Switzer, Villanova University

Membership chairman Art Switzer is pleased to report an all-time high PASFAA membership of 426. The breakdown by category includes:

Active members:

State-related	23
State-owned	32
Proprietary	76
Nursing	45
Private four-year	118
Public two-year	28
Private two-year	17

Associate members:

PHEAA staff	23
Lenders	38
Consultants	11
Students	2
Miscellaneous	13
	<u>87</u>
	<u>426</u>

At its last meeting, Council established membership dues for the 1985-86 year at the same rate as in 1984-85. Active membership will be \$22, associate membership \$20 and student membership \$10. At a time when most things are increasing in cost, Council is pleased to maintain dues at these rates.

THIS IS YOUR NEWSLETTER!

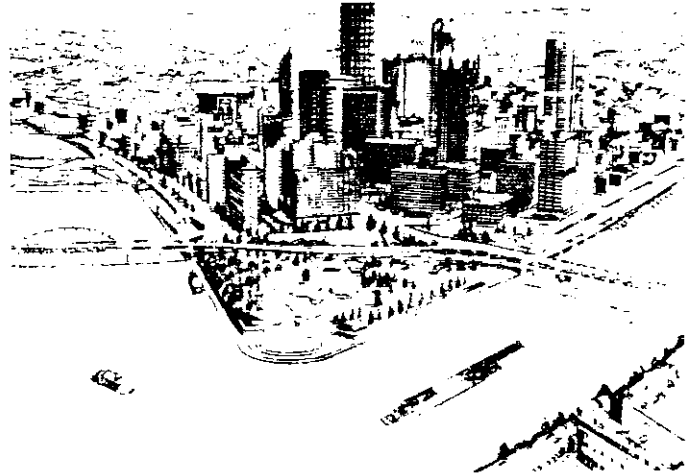
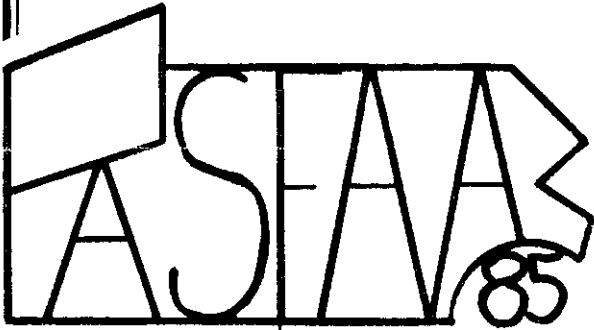
The PASFAA Newsletter is in need of more input from the membership on items of interest in our financial aid world. We urge you as an individual or as a member of informal aid groups or sectors to submit articles for future editions. Many new cartoons have been received as we all look for the humor in our lives and jobs. But the Newsletter also needs submission of editorials, articles, position openings and items for columns such as 'From the Lenders' Perspective,' 'Kudos and Congrats,' and 'Research Roundup.'

ATTENTION NASFAA GOERS

If you are planning to attend the NASFAA conference in Washington, D.C. and you are not scheduled to visit your Congressman, contact Gordon Bateman of Elizabethtown College. Bateman, PASFAA Legislative Network Coordinator, will supply you with details for contacting the Network Representative in your district so you can be a part of the visits on Capitol Hill. Bateman can be reached at (717)367-1151.



PASFAA '85 CONFERENCE HIGHLIGHTS



by Mary Andrews Miller, Indiana University of Pennsylvania

The seventeenth annual conference is only a few months away and we believe it will be one of the best ever, so don't miss it! To entice you further, here are some of the highlights of the conference:

Sunday, September 29, 1985

- *Conference registration beginning at 10:00 a.m.
- *Afternoon sessions including Academic Progress, Creative Packaging, Effective Writing and Publications and more.
- *The Third Annual Fun Run
- *Late night cruise aboard the Gateway Riverbelle

Monday, September 30, 1985

- *Concurrent sessions throughout the day including GSL/PLUS for Lenders, a Basic Approach to Overawards, Multi-Ethnic Perspectives, Debt Management, plus many other sessions.
- *Segmented Meeting luncheon (Italian Deli Buffet)
- *An afternoon general session featuring the Honorable William Goodling
- *PHEAA Grant Update

Tuesday, October 1, 1985

- *Concurrent sessions throughout the day including No Need Scholarships, Program Review and Audits, Family Financial Planning, Are Your Budgets Realistic, etc.
- *General session professional development topic on effective communication
- *Business meeting with the election results

Wednesday, October 2, 1985

- *PHEAA-HELP sessions
- *Federal Update



GOVERNMENT RELATIONS COMMITTEE-- UPDATE AND COMMENT

The Government Relations Committee met with the PASFAA Executive Council in Harrisburg June 3. The agenda included a discussion of HELP with Robert Pearl and other PHEAA staff. A number of concerns were raised regarding the start-up of this new loan program. As might be expected with a new program, some issues are not finalized as to its operation. It is also clear that changes are likely as the program moves into full operation. To assist financial aid officers in working with the program, information will be issued from time to time in a Question and Answer format.

Reauthorization

One of the roles of the Government Relations Committee is to keep the membership informed on issues which affect financial aid. To that end, a look at reauthorization seems appropriate at this time.

Reauthorization, that process by which the Title IV programs, as part of the Higher Education Act, are amended and re-enacted, has been on the horizon for the past several years. As early as 1983--a full two years before expiration of the current act--there was discussion of what should change and what should remain the same when the programs are extended for another five year period. At the 1984 EASFAA Conference in Newport, Rhode Island, NASFAA Executive Director Dr. Dallas Martin predicted that there would be no action before 1985 and that probably, under provisions which allow an automatic one year extension of the current act, legislation would not be passed until 1986.

However, between 1983 and the present a number of what may be called 'false starts' have emerged. Then-Representative Paul Simon offered a proposal that caused some stir in financial aid circles but did not progress very far in the Congress. Instead, the election and the deficit became major issues. The higher education community through various national representative organizations developed positions on various issues connected with reauthorization. It

appears however that in the main, Dr. Martin was accurate in his prediction that 1985 would be the year the process would begin in earnest.

Representative William Ford as Chairman of the House Post-Secondary Education Committee has begun hearings on all aspects of Title IV. These hearings in Washington and at other locations throughout the country will gather information from a variety of sources concerning needs of the financial aid programs. From these hearings, reauthorization legislation will be developed in the House.

For PASFAA, the Government Relations Committee prepared a position statement on certain issues and distributed it to the membership for comment in September 1984 and in the December 1984 Newsletter. The Committee will continue to monitor the reauthorization process and provide comments and position statements which represent the interest of PASFAA members and Pennsylvania post-secondary educational institutions. Much of our response will be through NASFAA as the national representative of financial aid concerns. PASFAA members are urged to keep informed of this on-going reauthorization process and to offer comments to the Government Relations Committee on matters that are of concern.

If I may be permitted a personal comment, it seems that talk of reauthorization has been around for so long that interest is cool at best. It is unfortunate that much energy was expended in the early stages when no real action was going to result. Now, over the next twelve months or so, is when the process is going to take place. These are the issues that will determine the course of financial aid for the next five years and beyond. It is vital that we in financial aid keep informed and that we exert such influence as we can into the process.

by William A. Irwin, Lock Haven University

PAATP SUMMER INSTITUTE DRAWS ENTHUSIASTIC GROUP

Forty-three participants attended the Fourth Annual PAATP Summer Financial Aid Institute at Dickinson College June 16-21. These participants represented proprietary schools, graduate programs, four-year and two-year colleges, and state universities.

The enthusiastic participants from Pennsylvania, New Jersey, Maryland and Vermont studied need analysis, Pell Grant formulas and other aid programs during the busy week. PHEAA staff Jay Evans, Gary Smith, Bob Pearl, Jerry Davis, Paula Norris and Vince Racculia presented details of PHEAA programs including a remote terminal demonstration at regional representative Tony Mazza's Carlisle office.

Jerry Davis' opening night speech set the tone for the week-long studies by explaining the important humanitarian aspects of the profession as well as the usual processing of forms and analyses. Resident faculty included Don Raley of Dickinson, Betty Davis of Community College of Allegheny County, Bill Irwin of Lock Haven University and Sheila Angst of Albright College.

The intense week-long program is designed to address needs of new financial aid administrators working in the profession two years or less. For eight of the participants, the institute was their first week of exposure to their new profession.

A reunion of this summer's participants is planned for the annual PASFAA Conference.

HELP LOANS-- QUESTIONS & ANSWERS

PHEAA's Robert Pearl issued the first set of Questions and Answers on HELP in mid-June. Many of these questions were gathered from the PAATP GSL workshops held throughout the state in May. Aid officers are urged to contact Pearl's office when other questions arise. In addition, those questions should be submitted in writing to Pearl for inclusion in the next set of Q & A's.

There is always concern with a new program and new procedures that only those who call with questions receive the answers. Let's all contribute any written questions to assist other aid officers who may not have stumbled on that specific problem just yet.

NAME AND ADDRESS CORRECTIONS

Please make the following corrections to your copy of the 1984-85 PASFAA Membership Directory:

NAME	CORRECTION
Alderton, Karen Financial Aid Director	PHONE (814)371-6920
Dixon, Darlene Financial Aid Officer	PHONE (215)568-3800
Narcum, Jean Financial Aid Advisor	INSTITUTION/ADDRESS Kings College 133 N. River Street Wilkesbarre, PA 18711 PHONE (717)826-5900
Plasket, John O. Student Loan Manager	NAME/TITLE Lewis, Michael G. Manager
Stanford, William Director of Financial Aid	TERMINAL TM18

NASFAA CONFERENCE EXPECTS LARGE TURN-OUT

Aid administrators from all over the nation will flock to Washington D.C. July 28-31 for the 11th annual NASFAA Conference with the theme *NASFAA: A Partner in Building a Better Tomorrow*. The conference will be held at the new J.S. Marriott Hotel. Conference and hotel registration information was sent to NASFAA members in mid-June. Among the planned features of the conference are visits to Capitol Hill, a financial aid publication exhibit, and many timely concurrent sessions and guest speakers from the Washington scene.

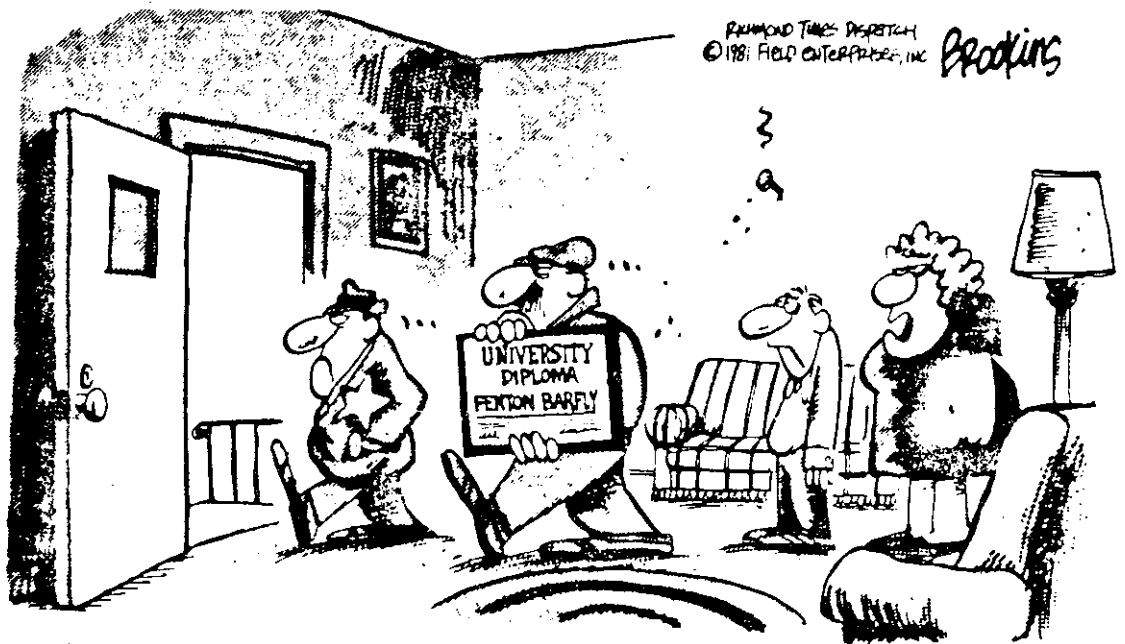


The Lighter Side...

During these hectic months, we need the lighter side more than ever!



So there I was, two days before the tax release deadline, computers down, surrounded by Federal Auditors . . .



"I TOLD YOU THE GOVERNMENT WAS CRACKING DOWN ON THOSE WHO HAVEN'T PAID BACK STUDENT LOANS, BUT NO, FENTON, YOU WOULDN'T LISTEN!"

By permission of Field Newspaper Syndicate.



FROM THE EDITOR'S DESK

THERE IS A DESK SOMEWHERE UNDER THIS PILE

Like your office, mine is overflowing with the usual piles of folders, aid applications and correspondence at this busy time of year. The recent mail has brought some long-awaited and curious pieces from Washington worthy of note.

Sifting through reveals such interesting items as very official-looking **unofficial** Pell Payment Schedules, a reprieve from Selective Service redundancy, a just-received *Quality Control Handbook* dated 'Winter 1984,' a *Pell Validation Handbook* which requires Herculean feats of interpretation and details on how to make a large X.

And so it goes...

We can finally get underway with making 'real' Pell awards, after having received an unofficial NASFAA payment schedule, now that we have received ED's official one.

Planning Ahead Department

Though the \$2,100 maximum Pell Grant has been in the law for some time, with funding the only uncertainty, the 1985-86 Payment Documents were not changed for coding of that amount. In boxes 6 and 7 on the back of the payment document \$1,999 would be the maximum award possible to code in the 'bubbles.' The most recent ED Dear Colleague Letter, which accompanied the 1985-86 statement of account for Pell, takes pains to explain how to handle that larger Pell Grant amount:

*Write the applicable amount in the small blocks in Item 6 or Item 7 and **do not** grid the bubbles. Draw a diagonal line from left to right (left most zero to right most nine) **and** from right to left (to make a large X) across the bubbles. We will key-enter the data in these cases.*

I'd like to see their description of a tic-tac-toe game!

Pell Validation Handbooks finally arrived! We just didn't expect what was delivered. Seeming to go far beyond regulation, ED now wants us to triple-check even nondiscrepant untaxed income, suddenly treat students differently if they are the magic age of 23 and require data never asked for on the original application form.

Let's sum up with an example of the level of excellence and care we are expected to emulate. This quote from page 25 of the *Validation Handbook* is an exercise in **WHAT'S WRONG WITH THIS SENTENCE?** Referring to the reasoning for using dependent student's estimated 1985 income at times instead of 1984 income:

This provision compensates for the fact that the dependent student is now allowed to file a Special Condition Application based on the loss of full-time employment.

A number of us will admit to typing 'now' for 'not' on occasion, but hopefully would catch it in proofreading. We'll grant ED the capacity for human error if we're given the same leeway.

How Do You Spell Relief?

Federal Register June 28, 1985 gives us permission to stop asking women if they are still women or young men if they have 'un-registered' for selective service. But perhaps the greatest relief comes in no longer having to gather information from all our students from the Northern Mariana Islands!

Have a good summer everybody!

by Sheila Angst

MOVING OR CHANGING POSITION?

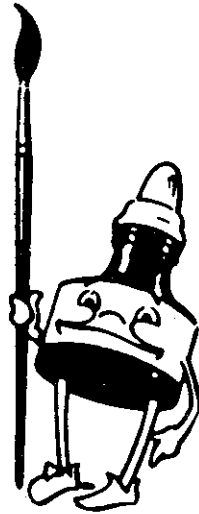
PASFAA membership belongs to the individual and not your institution. Please be sure to provide PASFAA with changes of address or changes in title. Membership directories, printed for PASFAA by Bob Prince of Financial Collection Agencies, have been sent to all members. You should review your entry and submit any necessary changes to the Financial Aid Office, East Stroudsburg University, East Stroudsburg, PA 18301 where the membership list is maintained. Also, please note the changes to your directory located elsewhere in this Newsletter.

NEWSLETTER PUBLICATION SCHEDULE

Editions of the PASFAA newsletter are scheduled every other month with the next one due in mid-August. Articles, editorials, position openings and other contributions must be submitted by the first week of the month of publication. All materials and any questions about the newsletter should be sent to Sheila Angst, P.O. Box 516, Reading, PA 19603.

NEW LOOK

Notice anything different? Our Newsletter has taken on a more polished look. Bigger headlines, double columns, justified right margins--hopefully all the marks of a more professional-looking publication in our continuing efforts to improve. Special thanks go to Vali Heist of Alvernia College who has joined the Newsletter, offering her expert typesetting skills and creativity.



DATES TO REMEMBER:

- **NASFAA** July 28-31, 1985
J.W. Marriott, Washington, D.C.
- **PASFAA** Sept. 29-October 2, 1985
Sheraton Inn at Station Square, Pittsburgh
- **EASFAA** May 4-7, 1986
Omni International Hotel, Baltimore, Maryland

PASFAA

PENNSYLVANIA
ASSOCIATION OF STUDENT
FINANCIAL AID
ADMINISTRATORS

P.O. Box 516
Reading, PA 19603