



QUEST  BRIDGE

# AN INTRODUCTION TO QUESTBRIDGE

*Connecting high-achieving, low-income students to top colleges*



# QuestBridge

NON-PROFIT | SINCE 1994 | PALO ALTO, CA

Our programs help bright, motivated students from low-income backgrounds navigate college admissions, access the nation's top colleges, and have additional opportunities after college graduation.

**90,000** Students served by our programs

**30,000** College students admitted to a QuestBridge college partner

**20,000** QuestBridge Scholars and Alumni worldwide





# An Intro

THE RESEARCH  
BEHIND US

Students who apply to **no** selective schools that are an academic fit.

Students who might apply to just **one** selective school, or similar strategy.

Students who apply to a **range** of reach, match, and safety schools.

High Income

Middle Income

Low Income

64%

8%

Adapted from *The New York Times*

Source: "The Missing 'One-Offs': The Hidden Supply of High-Achieving, Low Income Students,"  
by Caroline M. Hoxby and Christopher Avery; National Bureau of Economic Research

# Our College Partners

COMMITTED TO  
MEETING 100% OF  
DEMONSTRATED  
FINANCIAL NEED



Amherst College



Barnard College



Boston College



Boston University

Bowdoin

Bowdoin College



BROWN

Brown University

Caltech

California Institute of  
Technology



Carleton

Carleton College



Case Western  
Reserve University



CLAREMONT  
MCKENNA  
COLLEGE

Claremont McKenna  
College

Colby

Colby College



COLGATE  
UNIVERSITY

Colgate University



College of the  
Holy Cross



Colorado College



Columbia University

DARTMOUTH

Dartmouth College



Davidson College



Denison University

Duke  
UNIVERSITY

Duke University



Emory University



Grinnell College

Hamilton

Hamilton College

HAVERFORD  
COLLEGE

Haverford College



MACALESTER

Macalester College



Massachusetts  
Institute of  
Technology



Middlebury  
College

Middlebury College

Northwestern

Northwestern  
University



Oberlin College



Pomona College



Princeton University



Rice University



Scripps College



Stanford University



Swarthmore College

Tufts  
UNIVERSITY

Tufts University



University of Chicago



University of Notre Dame



University of  
Pennsylvania



University of  
Southern California



University of Virginia



Vanderbilt University

VASSAR

Vassar College



Washington and Lee  
University



Washington University  
in St. Louis



Wellesley College



Wesleyan University

Williams

Williams College

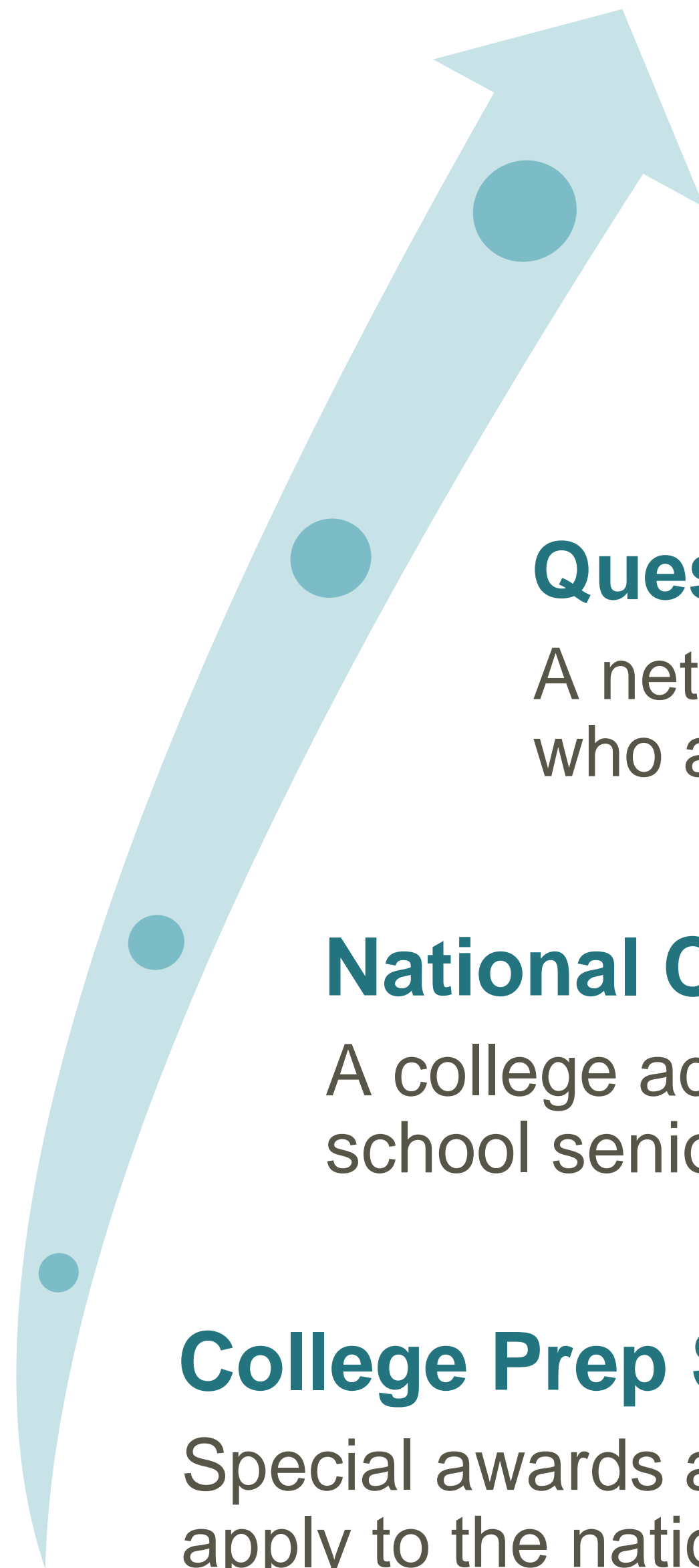


Yale University



# The Quest

OUR PROGRAMS  
FOR STUDENTS  
AND ALUMNI



## QuestBridge Alumni Association

A worldwide network that helps QuestBridge Alumni navigate careers and life after college.

## QuestBridge Scholars Network

A network of National College Match Finalists who are attending a QuestBridge college partner.

## National College Match

A college admissions and scholarship process that connects high school seniors to full four-year scholarships at our college partners.

## College Prep Scholars Program

Special awards and resources to prepare high school juniors to apply to the nation's best colleges.

# Who We're Looking For

ELIGIBILITY  
CRITERIA



## General

- Are U.S. citizens or Permanent Residents, or attend high school in the U.S., regardless of citizenship status



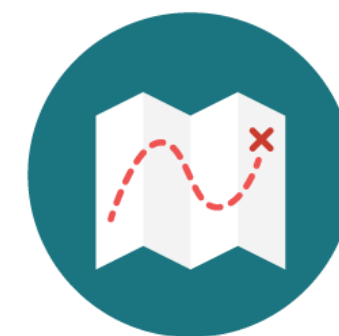
## Academic Achievement

- Earn primarily A's in the most challenging courses offered and fall within the top 5-10% of graduating class
- Score >1280 on the SAT or >27 on the ACT (*if taken*)
- Demonstrate strong writing skills and intellectual curiosity



## Financial Qualifications

- Typically from households earning less than \$65,000 annually with minimal assets (*for a family of four members*)
- May have extenuating circumstances impacting family finances

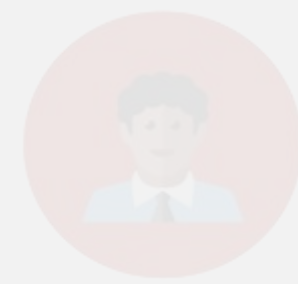


## Personal Circumstances

- Demonstrate strength in character and motivation to succeed
- Involved in or hold leadership roles in activities
- Are often first-generation college students

# Who We're Looking For

ELIGIBILITY  
CRITERIA



## General

### **An important note:**

We do not have absolute criteria or cut-offs for GPA, standardized test scores, or income, and we take a holistic approach in reviewing applications.



## Academic Achievement

- Earn primarily A's in the most challenging courses offered
- Top 5-10% of graduating class
- Score >1280 on the SAT or >27 on the ACT (*if taken*)
- Demonstrate strong writing skills and intellectual curiosity

### **We consider questions such as:**



## Financial Qualifications

Does this student have the motivation and academic ability to thrive at one of our college partners?

- Typically from households earning less than \$65,000 annually with minimal assets (*for a family of four members*)
- Extenuating circumstances impacting family finances

Does this student display resilience and good character despite personal adversity?



## Personal Circumstances

Is this student from a low-income background with minimal assets?

- Strength in character and extracurricular achievement despite experiencing difficult personal adversity
- Parents' level of education; often first-generation college students





# Juniors: College Prep Scholars Program

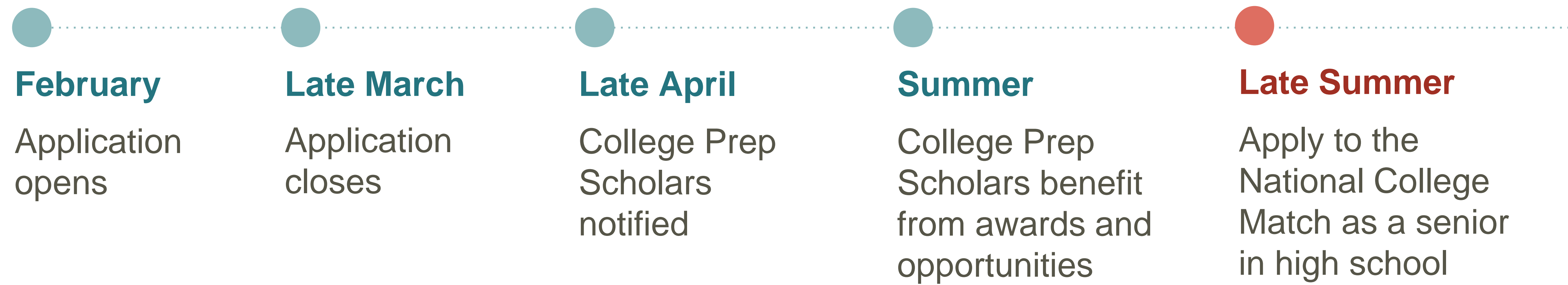
APPLICATION DEADLINE: LATE MARCH

- ✓ Awards, resources, and opportunities to help students develop a strong college application
- ✓ A head start in the competitive college application process
- ✓ A notable distinction recognized by all of our college partners
- ✓ A supportive community of motivated students who are also applying to top colleges





# Juniors: College Prep Scholars Program Timeline







# Seniors: National College Match

APPLICATION DEADLINE: LATE SEPTEMBER

- ✓ Full four-year scholarship with no loans or parent contribution (if matched)
- ✓ Free application to 48 college partners
- ✓ Consideration for early admission at up to 15 college partners at once
- ✓ Multiple opportunities for admission
- ✓ QuestBridge Scholars Network and Alumni Association





# Seniors: National College Match Timeline







# QuestBridge Scholars Network & Alumni Association

FOR FINALISTS WHO ATTEND A COLLEGE PARTNER

- ✓ Community of peers from similar backgrounds
- ✓ Leadership development, nationwide events, and networking opportunities
- ✓ Resources for life during and after college



# Key Information – [www.questbridge.org](http://www.questbridge.org)

OVERVIEW

WHO SHOULD APPLY

HOW TO APPLY

APPLY NOW

COLLEGE PREP SCHOLARS PROGRAM

The 2020 College Prep Scholars Program application is due on Tuesday, March 24, at 11:59 p.m. Pacific Time.

Applying to college can seem daunting, and the prospect of paying for it can seem even more overwhelming. *But it doesn't have to be.* The College Prep Scholars Program equips high-achieving high school juniors from low-income backgrounds with the knowledge, confidence, and resources to apply to top colleges.

**Why apply as a junior?** Being a College Prep Scholar is a notable distinction that shows our 42 college partners that you are a competitive candidate for admission. As a College Prep Scholar, you will receive exclusive awards and opportunities to develop a strong college application that shares your unique story.

Apply Now

**Awards for College Prep Scholars may include:**

- A full scholarship to a college summer program at Stanford, Yale, Notre Dame, and more. Scholarships are valued at up to \$20,000 and cover travel, tuition, and room & board.
- Quest for Excellence Awards, such as \$1,000 for a laptop, campus visits, or test score fees.
- An invitation to a QuestBridge National College Admissions Conference.
- Up to a \$500 travel voucher toward attending a QuestBridge National College Admissions Conference at Stanford, Emory, or UChicago.
- Personalized college essay feedback.

REFER A STUDENT

Refer high school juniors who would be strong candidates so we can reach out to them with more information.

NATIONAL COLLEGE ADMISSIONS CONFERENCES

Learn how our annual, invite-only conferences equip College Prep Scholars to get into top colleges.

ASKQB

Visit AskQB, our online help portal, to get your questions answered about the College Prep Scholars Program.

OVERVIEW

WHO SHOULD APPLY

HOW TO APPLY

HOW IT WORKS

REGULAR DECISION

NATIONAL COLLEGE MATCH

The 2019 National College Match application closed on September 26, 2019. View all dates and deadlines.

**The National College Match**

Are you a low-income high school senior who has excelled academically, but feels that the nation's best colleges are financially out of reach? The QuestBridge National College Match can be your pathway to a top college. Through this college and scholarship application process, you can apply for free to the nation's best colleges and be considered for early admission and a full four-year scholarship from the college. Watch our video to learn more:

Why apply through QuestBridge? The National College Match application gives you extra space to tell your unique story as a student who has excelled academically despite financial hardship. Our college partners are actively

REFER A STUDENT

Refer high school seniors who would be strong candidates so we can reach out to them with more information.

FINANCIAL AID AT TOP COLLEGES

Learn how top colleges can be the most affordable college option for students from low-income backgrounds.

ASKQB

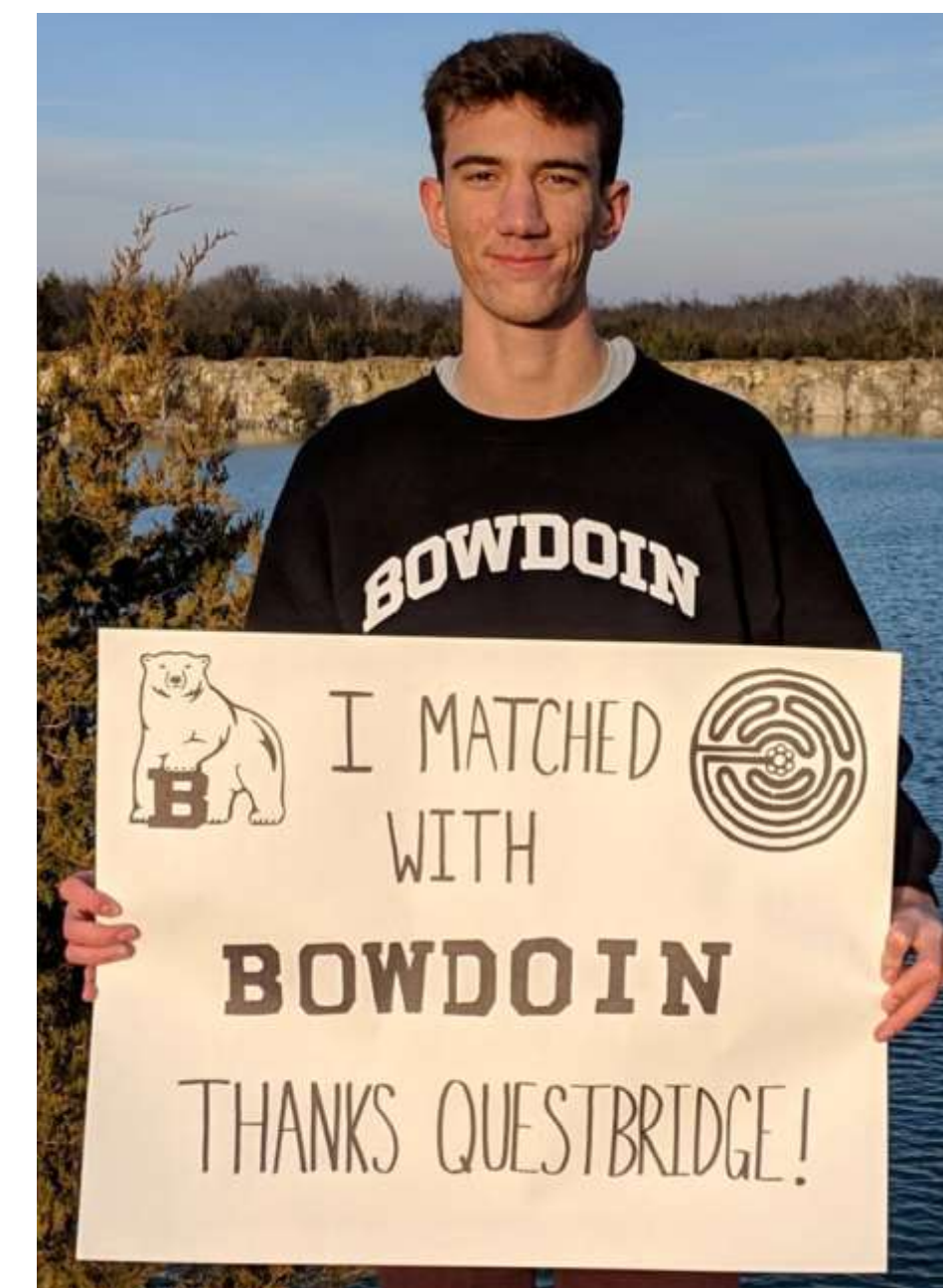
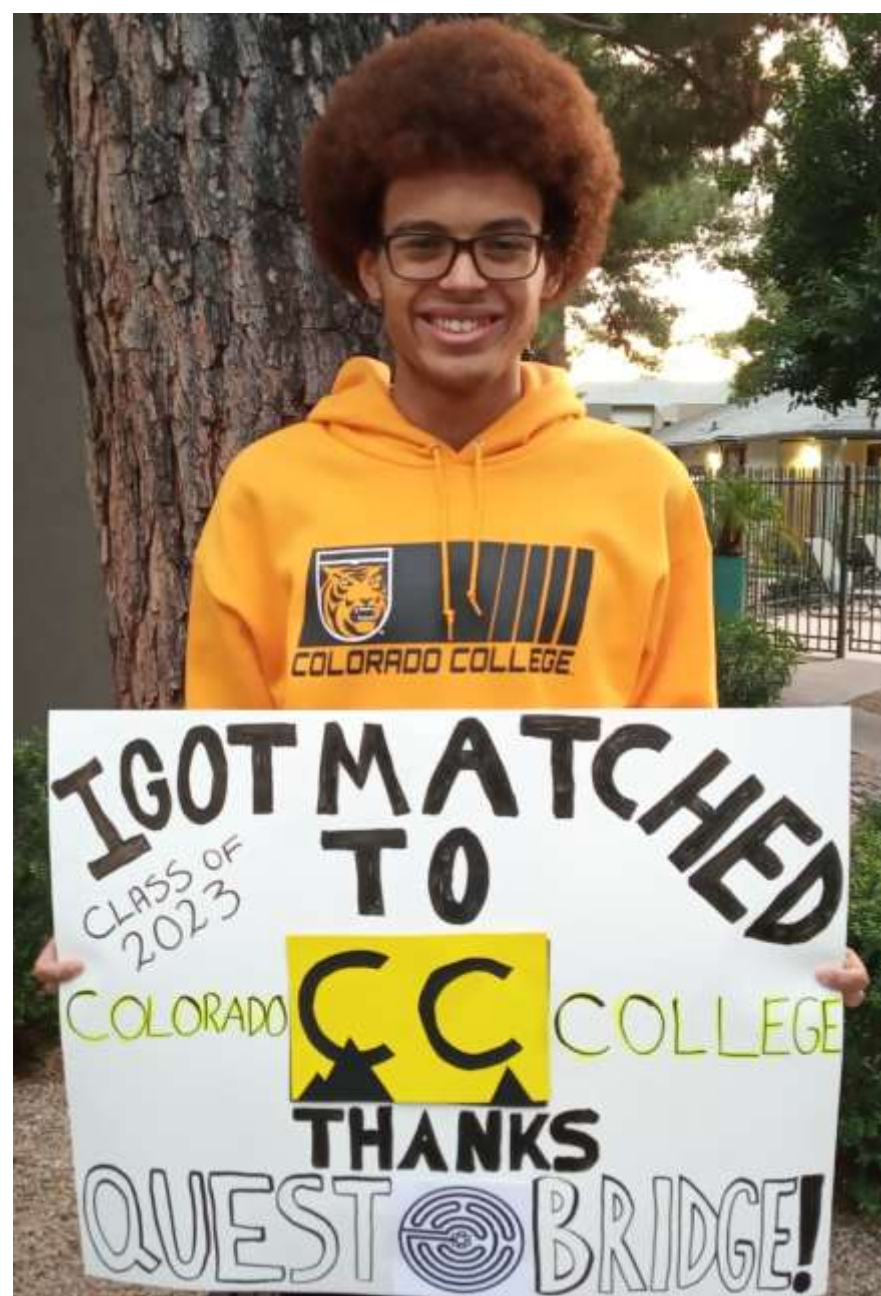
Visit AskQB, our online help portal, to get your questions answered about the National College Match.

<u>Overview</u>	<u>Overview</u>
<u>Who Should Apply</u>	<u>Who Should Apply</u>
<u>How to Apply</u>	<u>How to Apply</u>
	<u>How it Works</u>



# A TOP COLLEGE

is within reach.



[questbridge.org/AskQB](https://questbridge.org/AskQB)

[questions@questbridge.org](mailto:questions@questbridge.org)