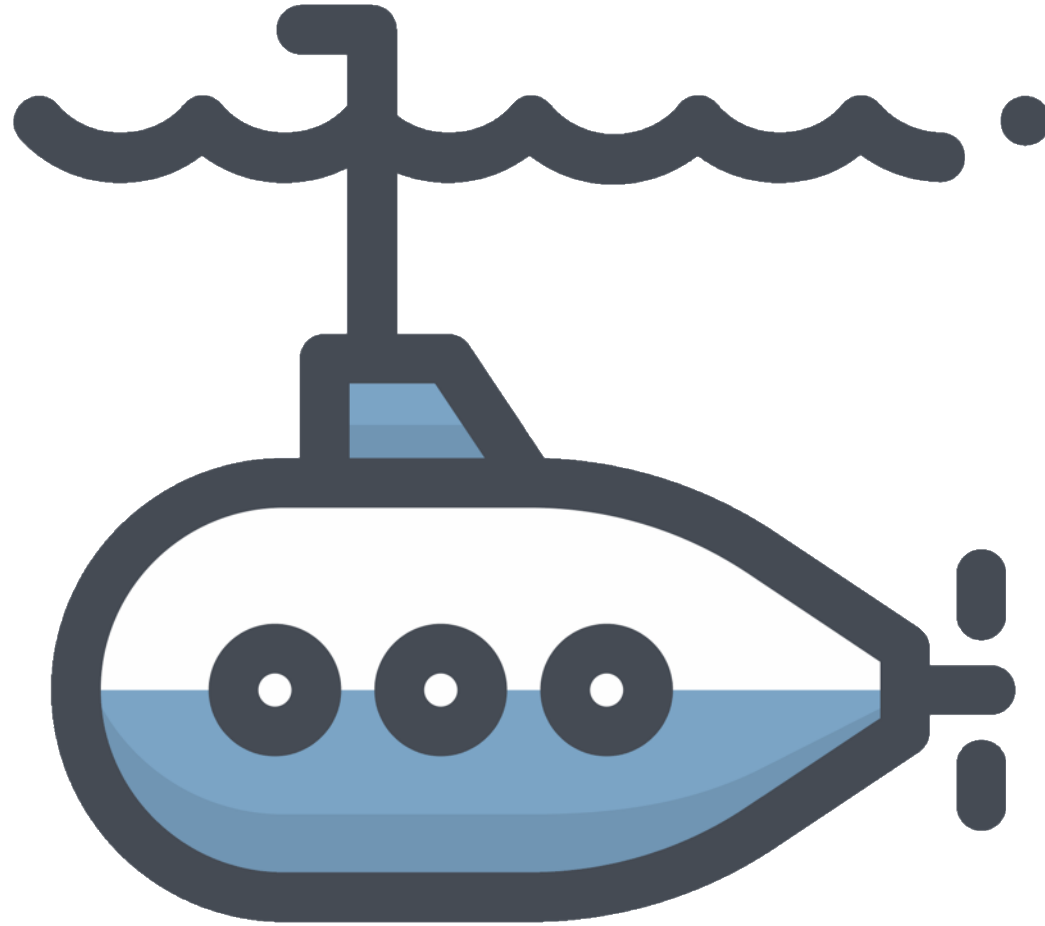
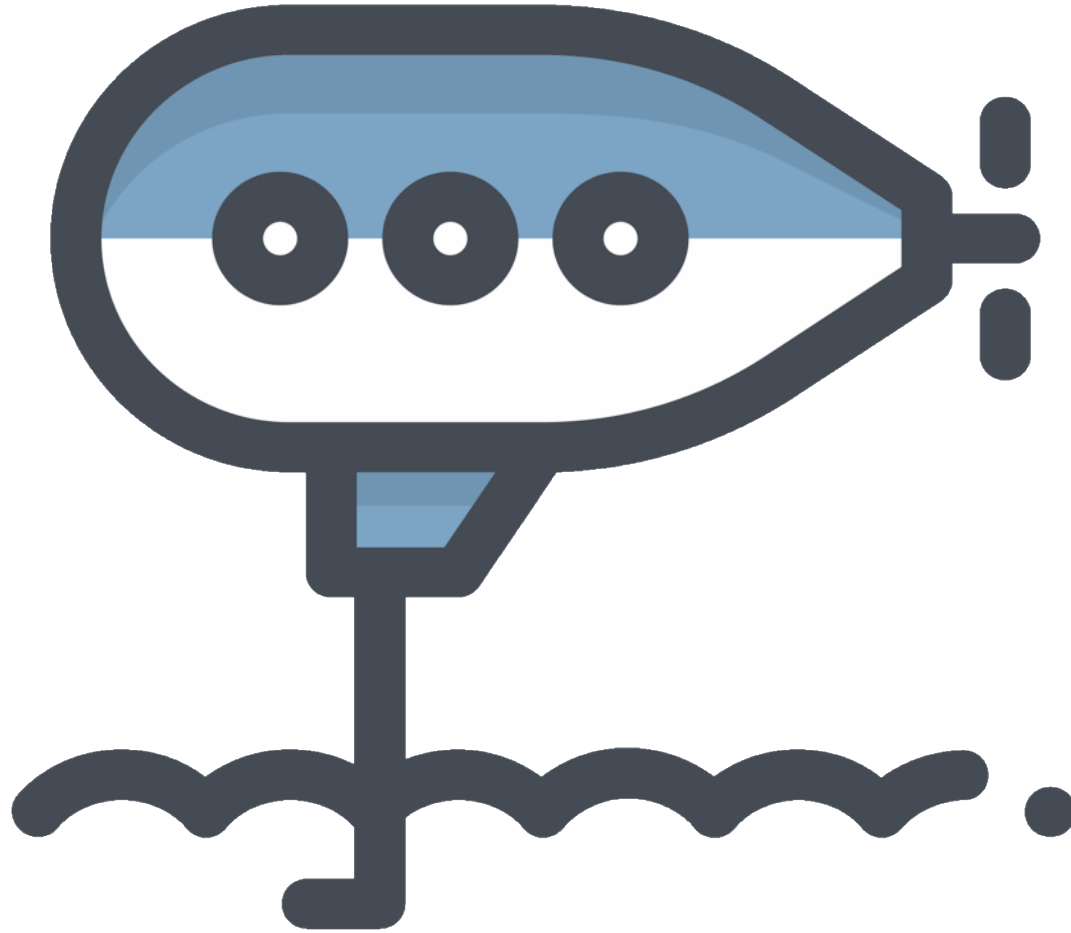


Nearly TOP-SECRET leadership lessons from the nuclear submarine force!



Kim McNealy, CMO of Ascent Student Loans

When leadership goes bad!



Welcome aboard



An underwater photograph showing two hands reaching out towards the surface. The left hand wears a black smartwatch, and the right hand wears a beaded bracelet. Sunlight rays stream down from the surface, creating a bright, shimmering effect. The water is clear and blue. The image is framed by a yellow and orange geometric border on the right side.

Life underwater

We own the outcome phrase; we own the leadership too.

Welcome aboard



Welcome to the Navy!

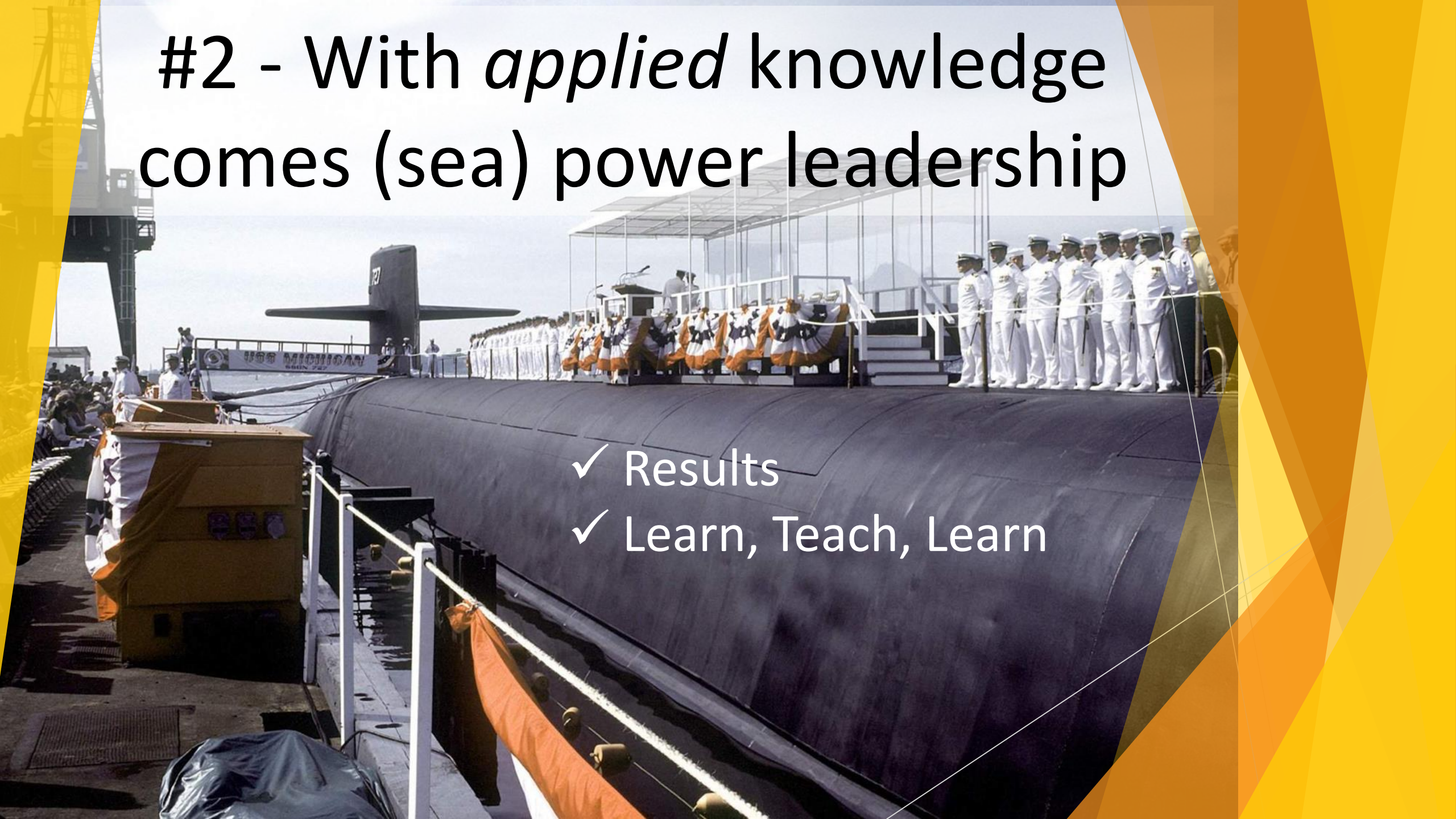




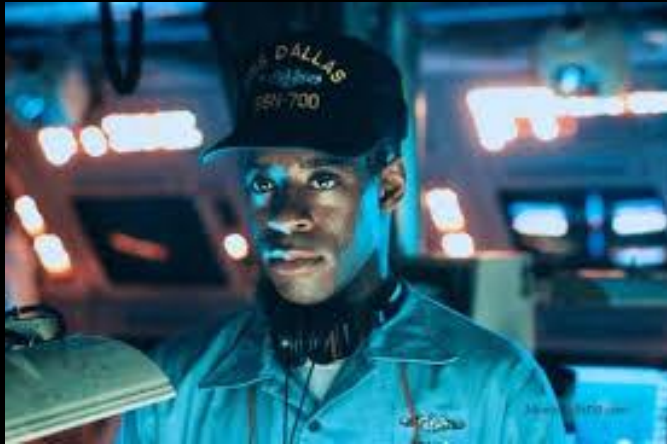
**#1 - Leadership requires
(nuclear powered) energy**

#2 - With *applied* knowledge comes (sea) power leadership

- ✓ Results
- ✓ Learn, Teach, Learn



#3 - Listening for deep insights



 THE HUNT FOR **RED**
OCTOBER™

Listening for deep insights ..outside



Trends



Competitors

Listening for deep insights ...inside



Captain's 4 Qs

If you were me, what 1 thing would you do to improve the way we work?

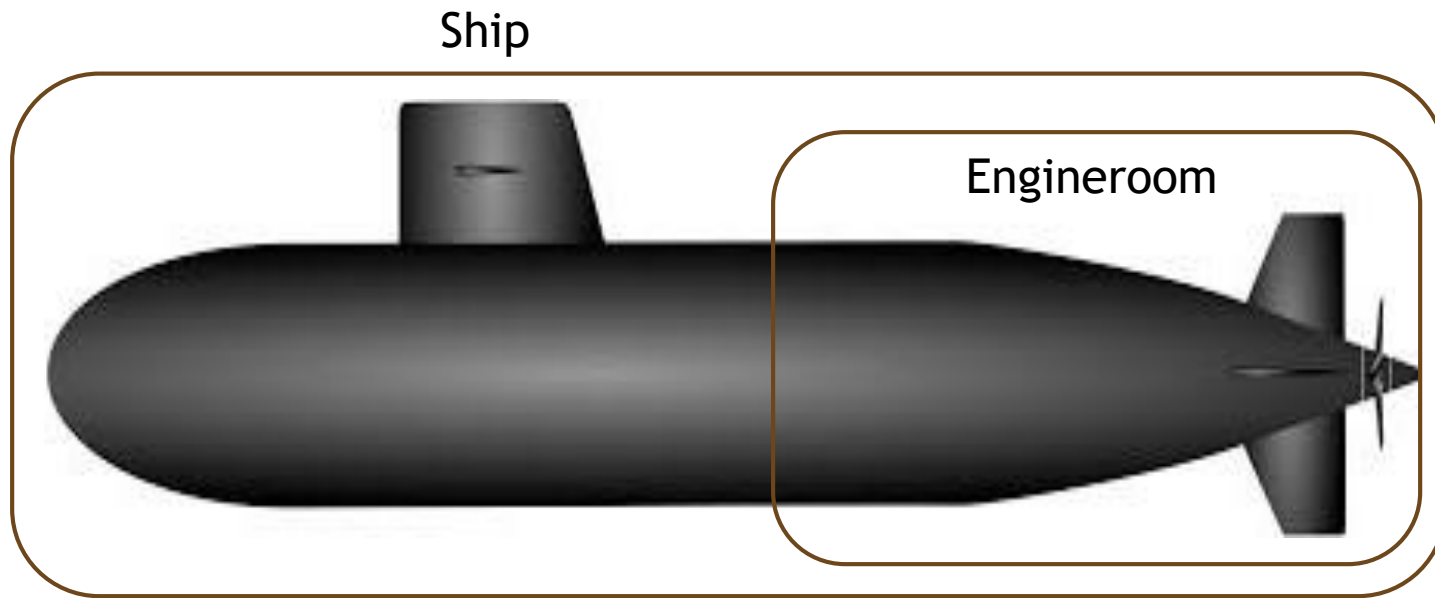
What do you love most about your role?

What do you like least about your role?

What do you aspire to do in your navy career?



?

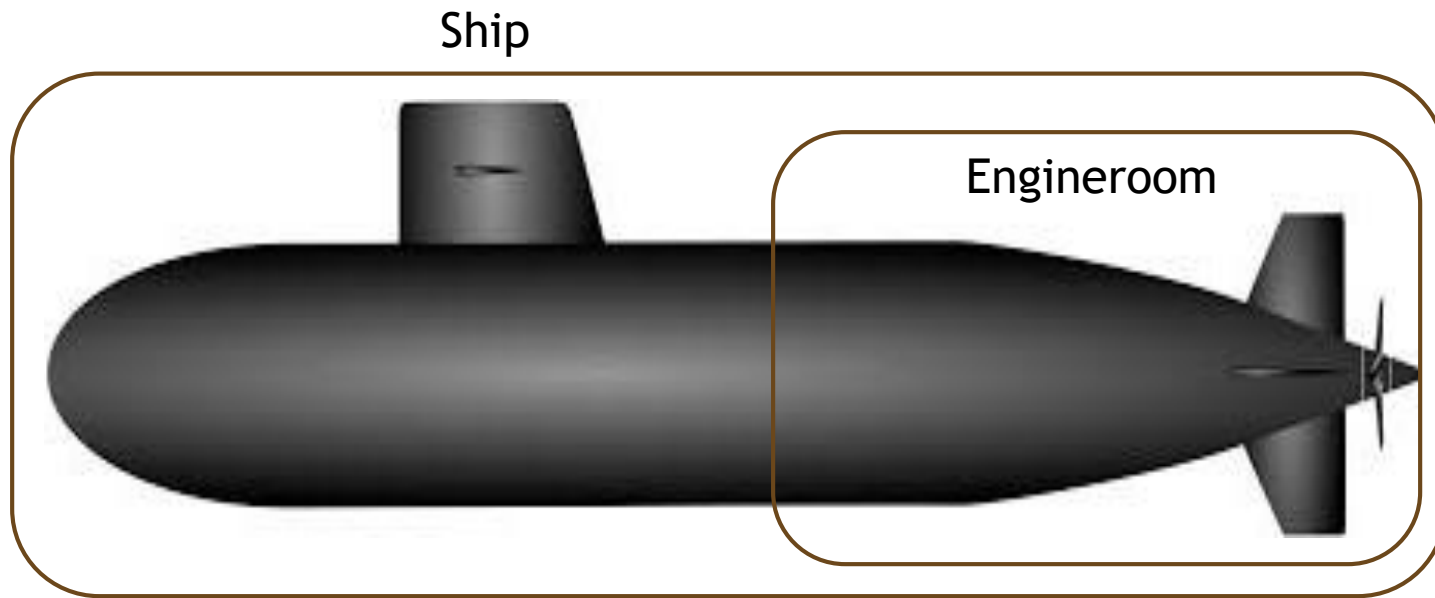


#4 - ABC...D

**Always be connecting
...the dots**



Not these dots 😊



#4 - ABC...D

**Always be connecting
...the dots**

**Challenge –
Always be connecting...the dots**



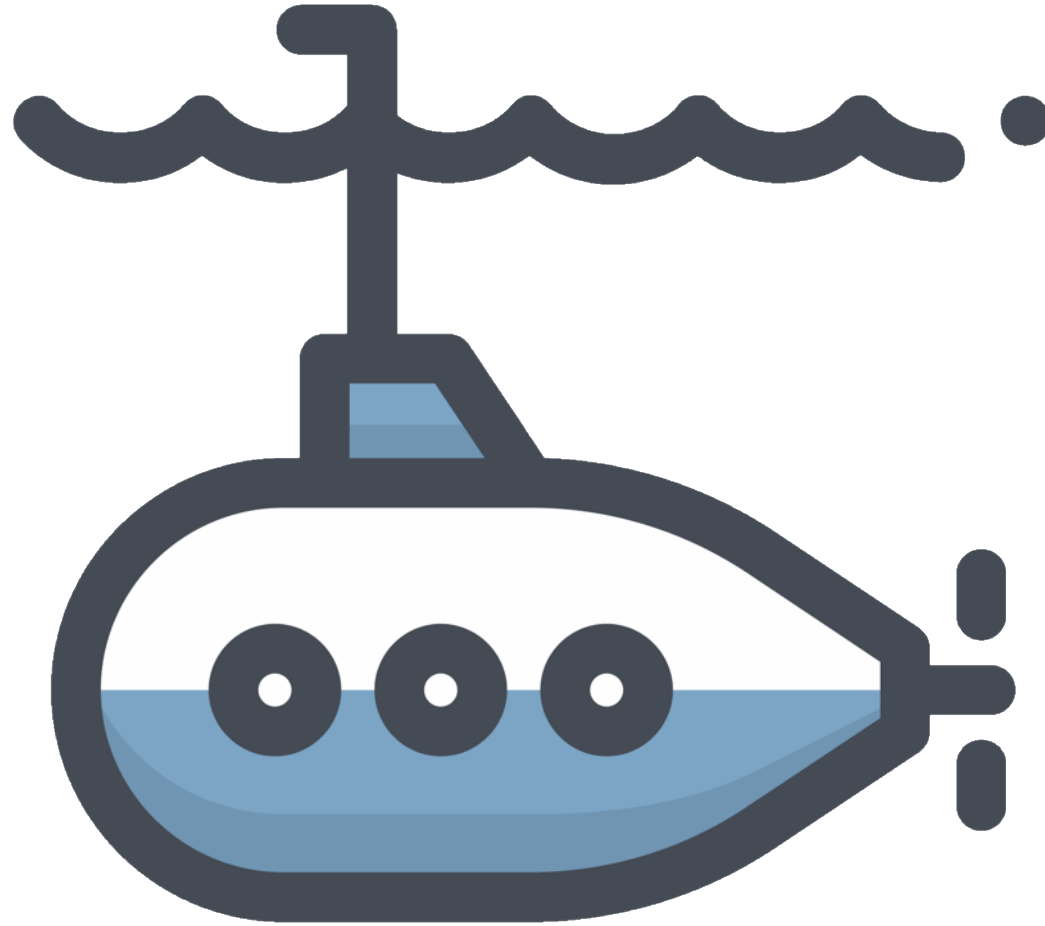
#5 - Embrace the 90-day year





Take the 90-day year challenge

Nearly TOP-SECRET leadership lessons from the nuclear submarine force!



Kim McNealy, CMO of Ascent Student Loans