

# Welcome

- QuestBridge
- Hebrew Free Loan Association
- Additional updates from Wendy Dunlap, President of the Western PA College Success Roundtable



We will be taking questions using the Q&A feature.



Click the ? symbol to see the feature box on the right of your screen.





“As a migrant, low-income, first-generation Latina, QuestBridge opened many doors. Everyone deserves to receive a good quality education, and QuestBridge can make this happen. To every high-achieving, low-income student, take full advantage of the resources available through QuestBridge. It seems too good to be true, and it only gets better.”

**Yessenia R.**  
*Rice University '23*





QUEST  BRIDGE

# THE NATIONAL COLLEGE MATCH: AN OVERVIEW FOR EDUCATORS

*2020 National College Match for High School Seniors*



# THE NATIONAL COLLEGE MATCH

## AGENDA

1

### AN INTRODUCTION

Learn about the background of QuestBridge and the National College Match.

2

### PROCESS AND TIMELINE

Understand the overall process of ranking and matching with college partners.

3

### MULTIPLE OPPORTUNITIES FOR ADMISSION

Be informed about the options and the benefits of applying through QuestBridge.





QUESTBRIDGE AND THE  
NATIONAL COLLEGE MATCH

# AN INTRO



# QuestBridge

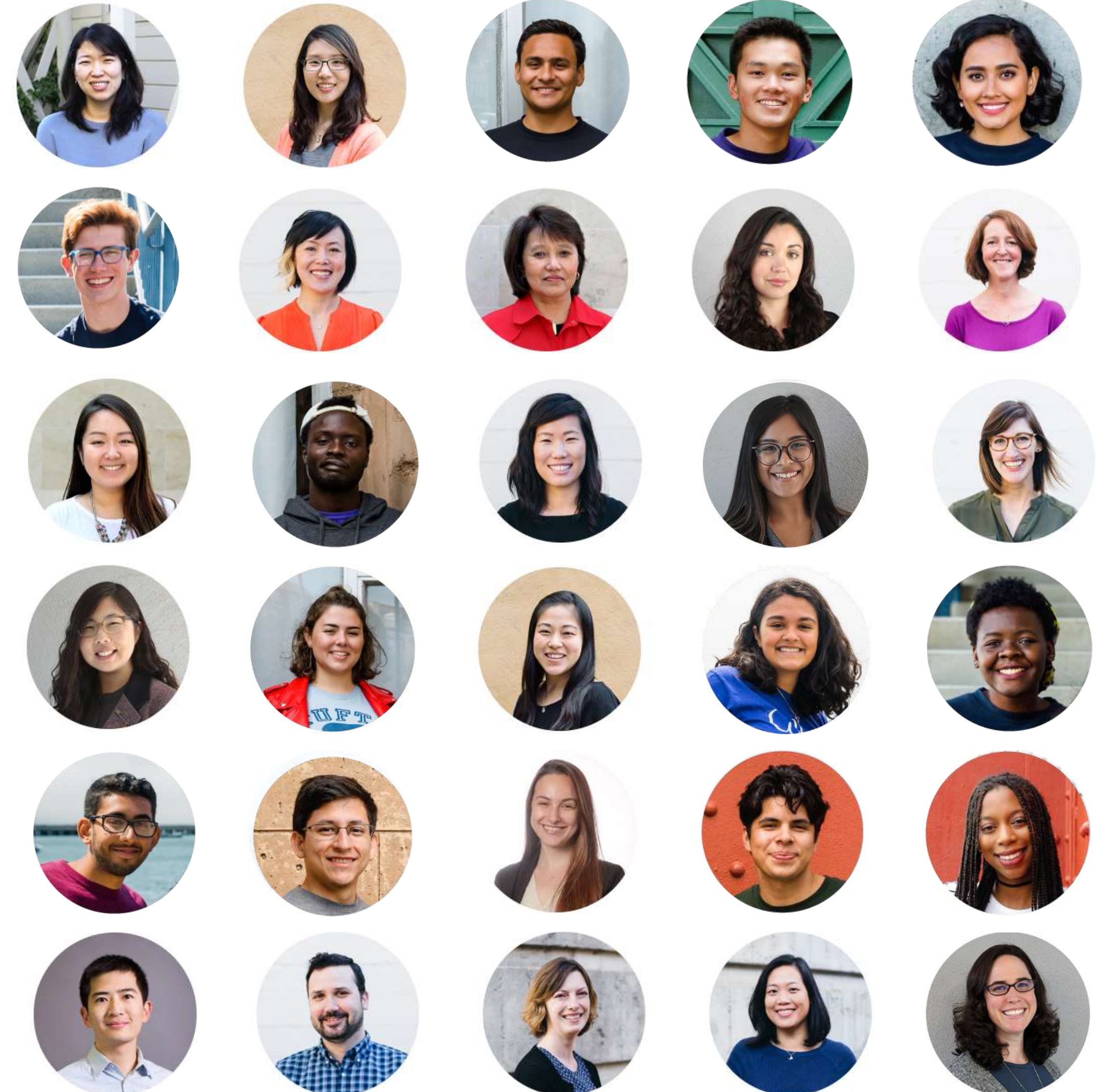
NON-PROFIT | SINCE 1994 | PALO ALTO, CA

Our programs help bright, motivated students from low-income backgrounds navigate college admissions, access the nation's top colleges, and have additional opportunities after college graduation.

**70,000** Students served by our programs

**27,000** Finalists admitted to a QuestBridge college partner

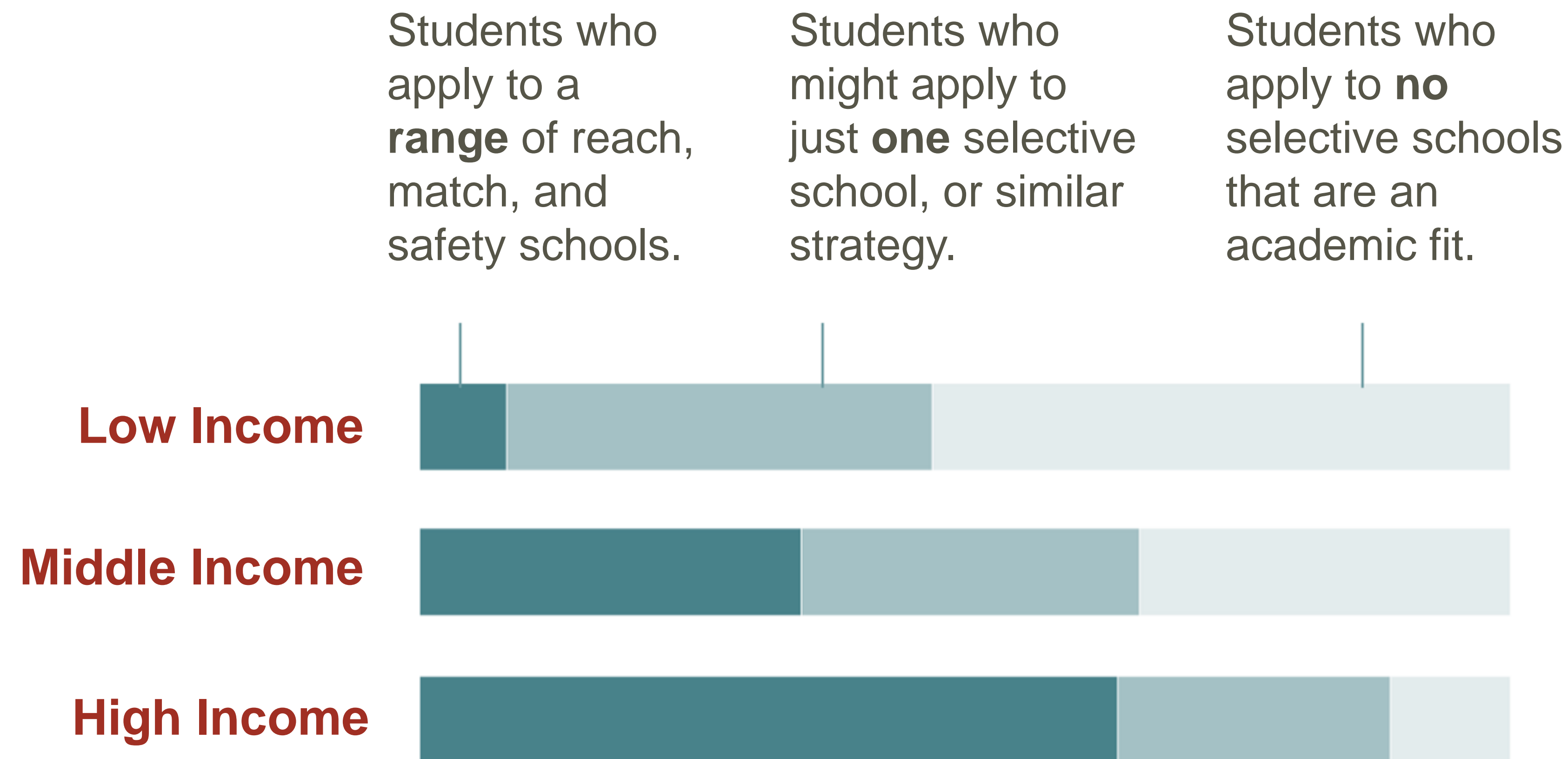
**15,000** QuestBridge Scholars and Alumni nationally





# An Intro

THE RESEARCH  
BEHIND US



Adapted from The New York Times

Source: “The Missing ‘One-Offs’: The Hidden Supply of High-Achieving, Low Income Students,”  
by Caroline M. Hoxby and Christopher Avery; National Bureau of Economic Research



# An Intro

## OUR COLLEGE PARTNERS



Amherst College



Boston College

**Bowdoin**

Bowdoin College



Brown University

**Caltech**

California Institute of Technology



Carleton College



CLAREMONT  
MCKENNA  
—COLLEGE—  
Claremont McKenna College



Colby College



Colgate University



Colorado College



Columbia University

**DARTMOUTH**

Dartmouth College



Davidson College



Duke University



Emory University



Grinnell College

**Hamilton**

Hamilton College

**HAVERFORD**  
COLLEGE

Haverford College



**MACALESTER**  
Macalester College



Massachusetts Institute of Technology

**Northwestern**

Northwestern University



Oberlin College



Pomona College



Princeton University



Rice University

**SCRIPPS**  
COLLEGE

Scripps College



Stanford University



Swarthmore College



Tufts University



University of Chicago



University of Notre Dame



University of Pennsylvania



University of Southern California



University of Virginia



Vanderbilt University

**VASSAR**

Vassar College



Washington and Lee University



Washington University in St. Louis



Wellesley College



Wesleyan University

**Williams**

Williams College

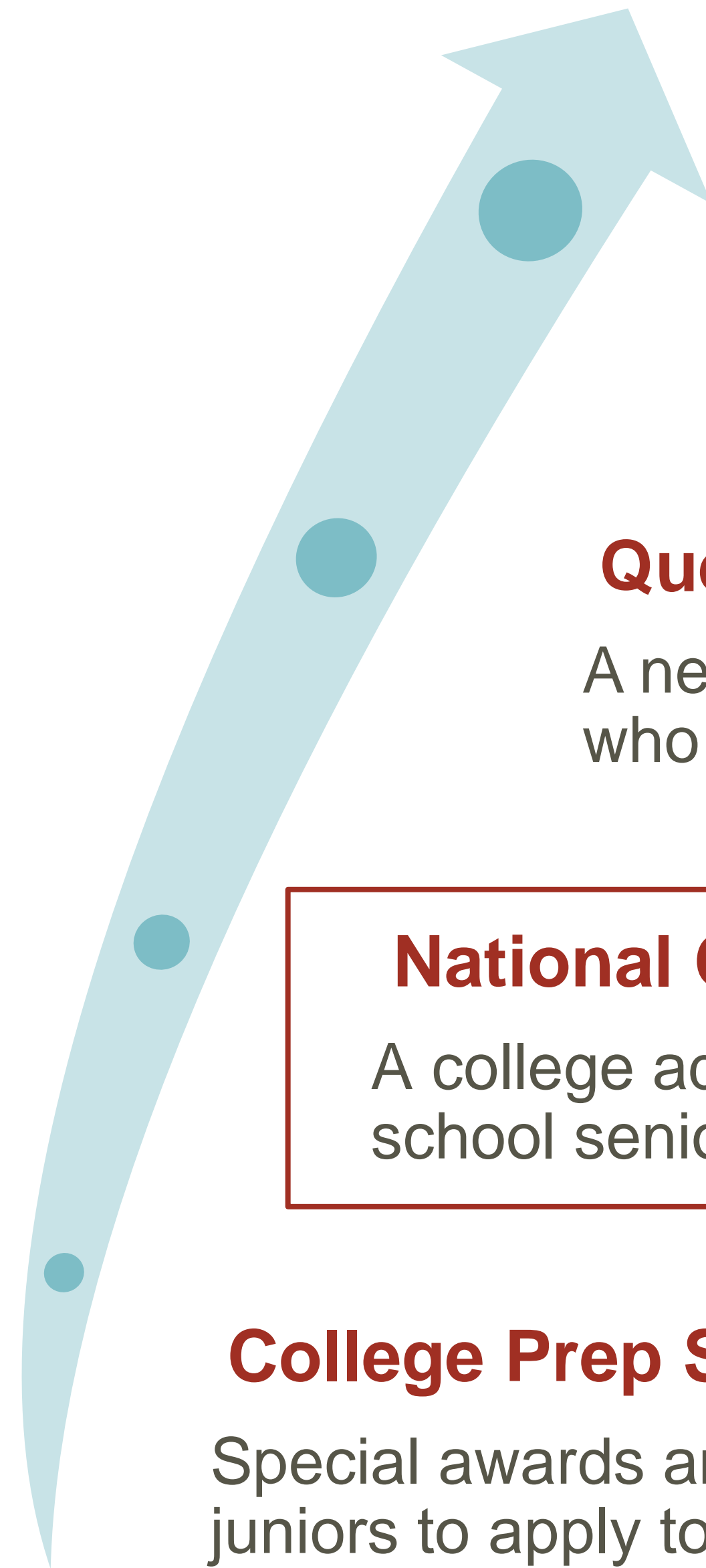


Yale University



# An Intro

## OUR FOUR PROGRAMS



### **QuestBridge Alumni Association**

A worldwide network that helps QuestBridge Alumni navigate careers and life after college.

### **QuestBridge Scholars Network**

A network of National College Match Finalists who are attending a QuestBridge college partner.

### **National College Match**

A college admissions and scholarship process that connects high school seniors to full four-year scholarships at our college partners.

### **College Prep Scholars Program**

Special awards and resources to prepare high school juniors to apply to the nation's best colleges.



# An Intro

WHO WE'RE  
LOOKING FOR



## General

- Are U.S. citizens or Permanent Residents, or attend high school in the U.S., regardless of citizenship status



## Academic Achievement

- Earn primarily A's in the most challenging courses offered and rank within the top 5-10% of graduating class
- Score >1280 on the SAT or >27 on the ACT (if taken)
- Demonstrate strong writing skills and intellectual curiosity



## Financial Qualifications

- Typically from households earning less than \$65,000 annually with minimal assets (for a typical family of four)
- May possess extenuating circumstances impacting family finances



## Personal Circumstances

- Demonstrate strength in character and resilience
- Involved in or possess leadership roles in extracurricular activities
- Are often first-generation college students



# An Intro

WHO WE'RE  
LOOKING FOR

## General

### **An important note:**

We do not have absolute criteria or cut-offs for GPA, standardized test scores, or income, and we take a holistic approach in reviewing applications.

### **We consider questions such as:**

Does this student have the motivation and academic ability to thrive at one of our college partners?

Does this student display resilience and good character despite personal adversity?

## Personal Circumstances

Is this student from a low-income background with minimal assets?

- Demonstrate strength in character and resilience
- Involved in or possess leadership roles in extracurricular activities
- Are often first-generation college students





# 2019 National College Match Finalist Profile

5,842 SELECTED FINALISTS

**80%** Free or reduced-price lunch

**3.9** Average unweighted GPA

**90%** Household income under \$65,000

**87%** Ranked in top 10% of class

**73%** First-generation to a 4-year college in the United States

**1310-1450**  
**28-32** SAT and ACT test scores (Middle 50%)



# An Intro

## APPLICATION COMPONENTS



### **Household and Financial**

Family situation, number of household members, income and assets



### **Academic**

Transcript, high school information, 12<sup>th</sup> grade coursework



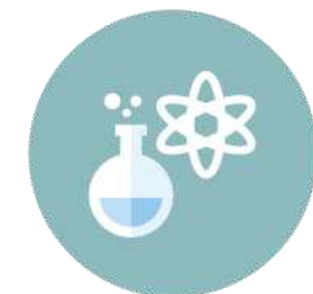
### **Testing and Honors**

Standardized test scores (if taken), honors and awards



### **Writing**

Two essays, short answers, additional information



### **Activities and Work Experience**

Clubs, volunteerism, athletics, family responsibilities, part-time job



### **Teacher Recommendations and School Report**

Two recommendations from recent core subject teachers  
One recommendation from a current high school counselor



# An Intro

## APPLICATION COMPONENTS

### Household and Financial

Family situation, number of household members, income and assets

## 2020 National College Match Updates:

### Academic

Transcript, high school information, 12<sup>th</sup> grade coursework

**Standardized test requirements:** National College Match applicants are encouraged to enter any available test scores, but test scores are not required to apply.

### Testing and Honors

Standardized test scores (if taken), honors and awards

**Supplemental questions:** School Reports and recommendations have a new, optional response for you to elaborate on the impact of the COVID-19 pandemic or other disruptions. Students also have designated space in their application.

### Writing

Two essays, short answers, additional information

### Activities and Work Experience

**Non-binding college partner:** This year, Massachusetts Institute of Technology is the only college partner that has a non-binding policy if a student is matched.

### Teacher and School Report

Two recommendations from recent core subject teachers

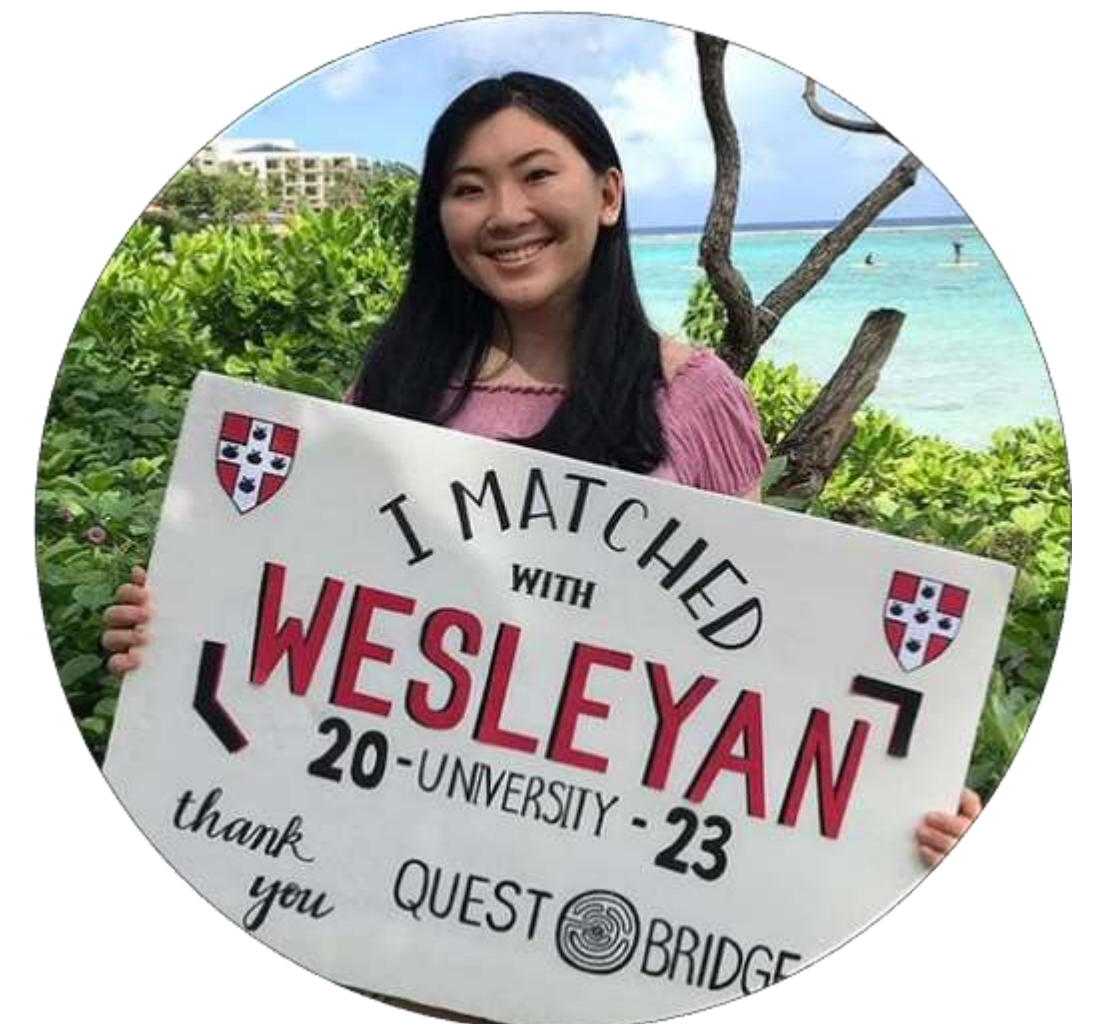
One recommendation from a current high school counselor



# An Intro

## ADVANTAGES OF APPLYING

- ✓ Full four-year scholarship
- ✓ Consideration for early admission at multiple college partners at once
- ✓ Free application to our college partners
- ✓ Multiple opportunities for admission
- ✓ An application designed to highlight student's unique story and background
- ✓ The QuestBridge Scholars Network and Alumni Association





# An Intro

WHAT DOES  
MATCHING  
MEAN?



Early admission



Full four-year scholarship



Tuition, books, and  
supplies



Travel, room and board



No parent contribution, no loans





The Match Scholarship package:

**\$ 0 P A R E N T C O N T R I B U T I O N**  
**\$ 0 L O A N S**



# An Intro

## SAMPLE MATCH SCHOLARSHIP PACKAGE

### Carleton College: 2020-2021 Match Scholarship Package Example

<u>Annual Cost of Attendance</u>		<u>How Costs are Covered</u>	
Tuition	\$56,778	Parent Contribution	\$0
Room & Board	\$14,658	Work-Study	\$2,580
Books & Supplies	\$865	Summer Work	\$1,957
Travel	\$850	Student Loans	\$0
Personal Expenses	\$866	Student Savings**	\$0
Health Insurance*	\$1,956	Scholarship/Grants	\$71,769
Required Fees	\$333		

\*Required **Total**

**\$76,306**

**Total**

**\$76,306**

\*\*Some colleges expect students to contribute a percentage of their savings





RANKING AND MATCHING

# PROCESS AND TIMELINE



2020 NATIONAL COLLEGE MATCH

# PATHWAY TO COLLEGE

**Late Summer**  
Start a free,  
online application.



**September 29**  
Submit application.



**October 15**  
Rank up to 12  
college partners.



**October 21**  
Finalists notified.



**November 1**  
Finalists submit  
Match Requirements.



**December 1**  
Finalists who ranked colleges  
find out if they matched.

**MATCH  
DAY**





**Not matched?  
That's okay!**

Review  
admission  
opportunities  
and next steps  
from ranked  
schools.



**Matched? Congrats!**  
Admitted early with  
a full four-year scholarship.



**December 9**

Submit the QuestBridge Regular Decision  
Form to be considered for admission and  
generous financial aid to additional college  
partners.



**Fall 2021**

**Enrolling at a college partner?**  
Join the QuestBridge Scholars  
Network!

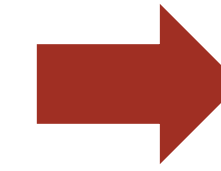
# **STUDENTS MUST RANK COLLEGES TO PARTICIPATE IN THE MATCH.**

Students can rank up to 12 colleges!  
Keep in mind that ranking more colleges  
increases the chance of matching.



# Process and Timeline

## RANKING AND MATCHING



Students rank **up to 12 college partners** to be considered for early admission with the Match Scholarship.

College partners review applications and select who **they wish to admit** with the Match Scholarship. They do not know where students ranked them.

### Finalists who are matched:

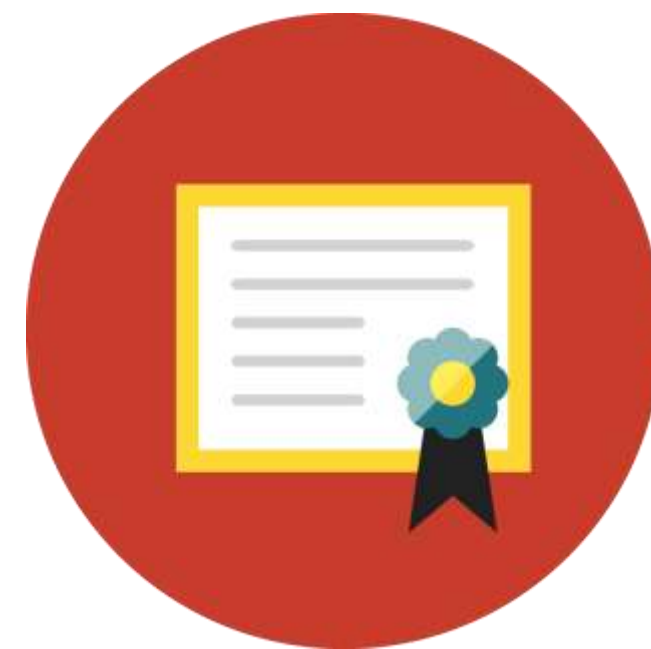
- ✓ Are matched to their highest ranked school that selected them.
- ✓ Are only matched to one school.
- ✓ Have committed to attend the school they are matched to.

# Process and Timeline

2019

RANKING  
FIGURES

Of the 1,127 Match Scholarship Recipients in 2019:



**75%**

Matched to one of  
their top 5 colleges



**7.5**

Average number of  
colleges on rankings list



**67%**

Ranked 7 or  
more colleges





THE QUESTBRIDGE JOURNEY

# MULTIPLE OPPORTUNITIES FOR ADMISSION

# Multiple Opportunities

QUESTBRIDGE

REGULAR

DECISION

**5,842**

2019 National College Match Finalists selected

**1,127**

2019 Finalists matched to  
a college partner with a  
full four-year scholarship

**2,000<sup>\*</sup>**

2019 Finalists admitted through  
QuestBridge Regular Decision  
*(\*estimate based on prior years)*



# Multiple Opportunities

BENEFITS OF  
QUESTBRIDGE  
REGULAR  
DECISION

- ✓ Full four-year scholarship
  - ✓ Consideration for early admission at multiple college partners at once
- ✓ Free application to our college partners
  - ✓ Multiple opportunities for admission
  - ✓ An application designed to highlight unique story and background
  - ✓ The QuestBridge Scholars Network and Alumni Association



Students who do not match can still  
receive an excellent financial aid package with

**LOW EXPECTED FAMILY  
CONTRIBUTION.**



# Multiple Opportunities

## SAMPLE REGULAR DECISION FINANCIAL AID PACKAGE

### Dartmouth College: 2020-2021 Academic Year

#### Scenario

- Family living in Wisconsin
- Parents married
- \$50,000 income
- No other assets
- One other sibling in high school

**Total Cost of  
Attendance** **\$75,138**

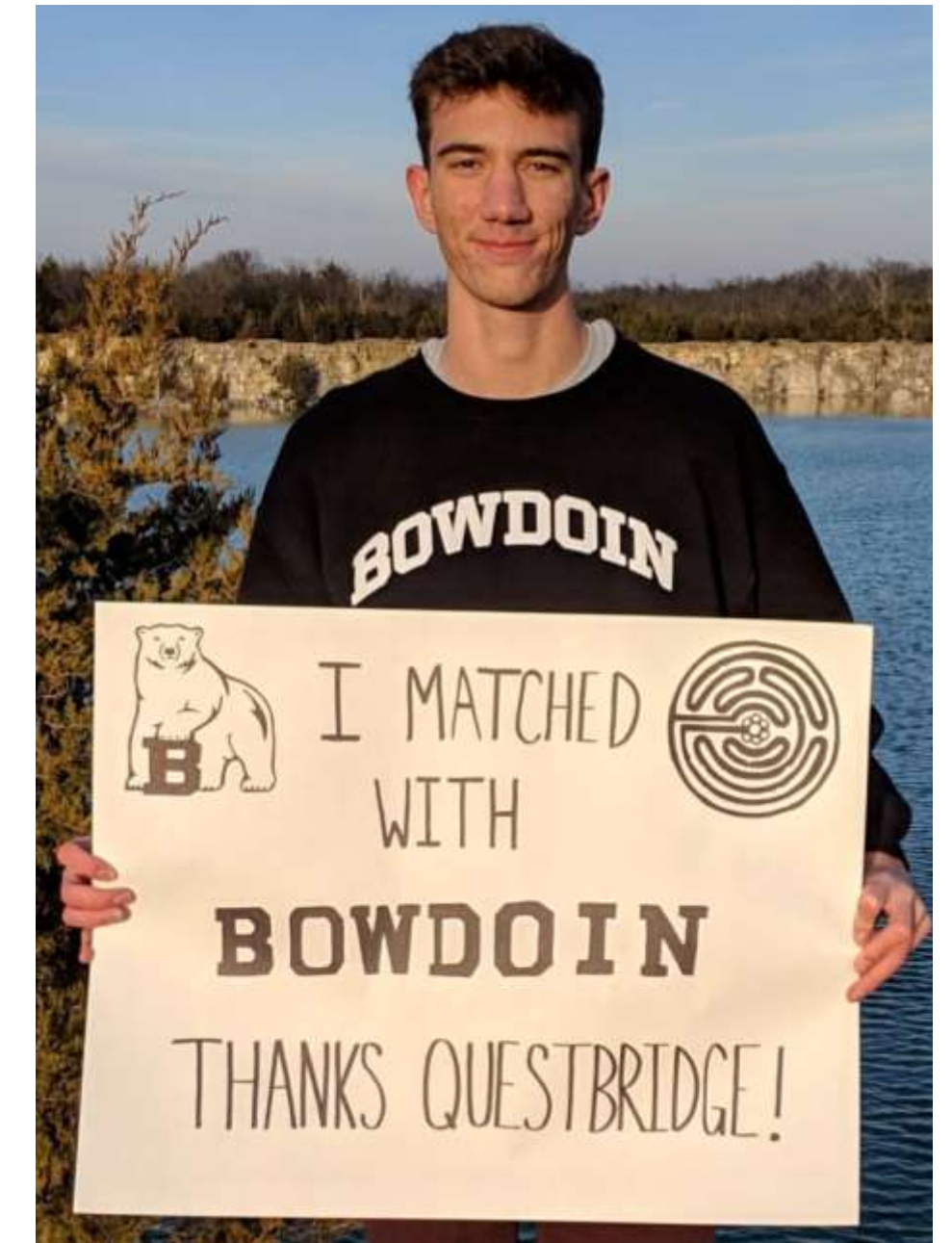
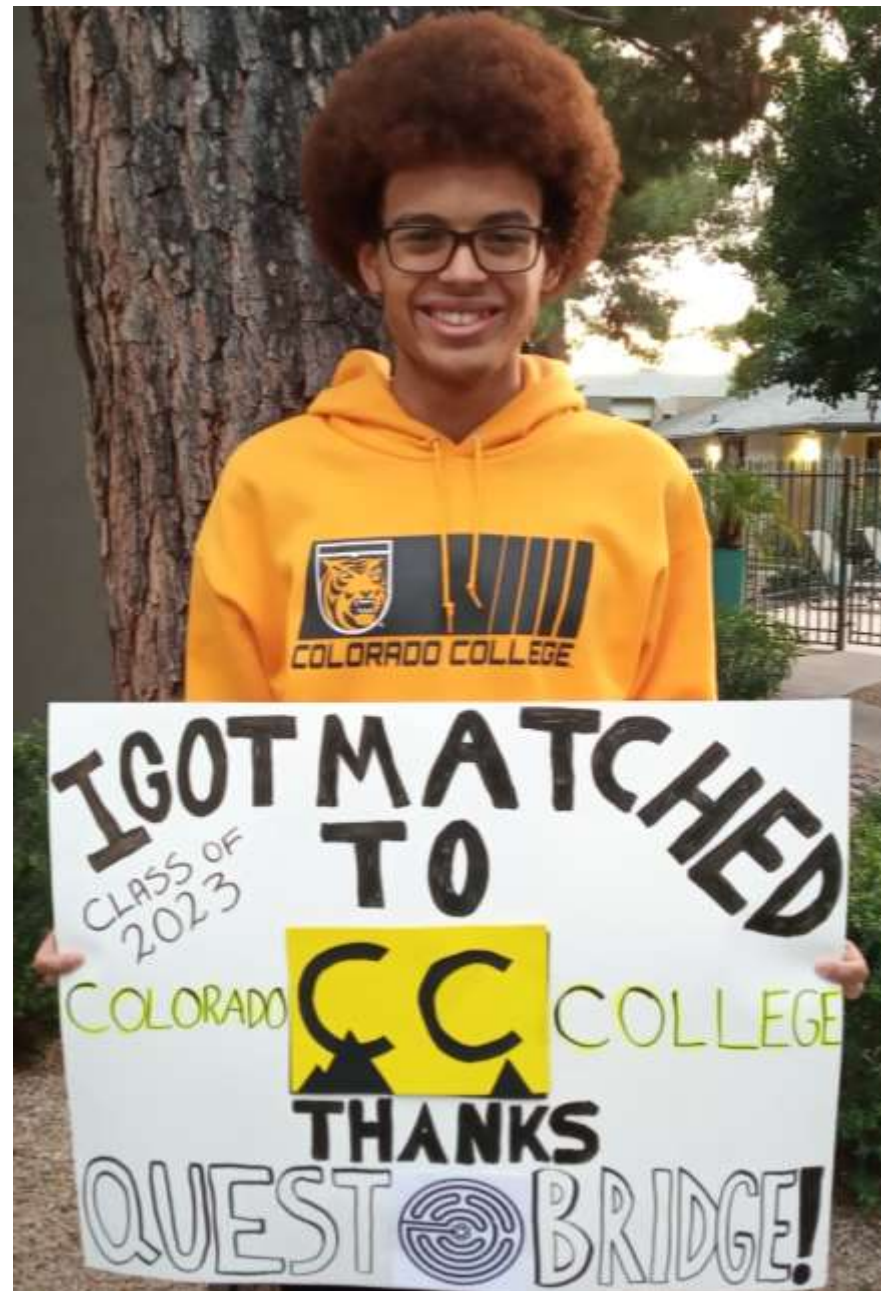
#### How Costs are Covered

Parent Contribution	\$1,673
Work-Study	\$2,450
Summer Work	\$1,000
Student Loans	\$0
Student Savings**	\$0
Scholarship/Grants	\$70,015

**Total Financial  
Aid Package** **\$75,138**



Your students *can* afford a  
**TOP COLLEGE.**







# Next Steps

## The 2020 National College Match



Refer qualified students on our website.



Provide feedback as they review and polish the biographical essay.



If you are asked, write a strong recommendation on their behalf.



Encourage students to research college partners to rank.



# Thank you for joining our QuestCast.



**Have questions?**

Visit [QuestBridge.org/AskQB](https://QuestBridge.org/AskQB).





Hebrew Free Loan  
Association Pittsburgh

# Interest-Free Loans

Up to \$8,000 • No fees

- **TUITION**
- Job training
- Car purchase/repair
- Home improvement
- Medical/dental
- Weddings
- Credit card debt
- Legal fees
- Small business
- Fertility/adoption expenses
- Taxes



# A Nonprofit, Not a Charity

Hebrew Free Loan is a nonsectarian nonprofit organization, not a social service agency.

**An interest-free loan is a smart financial decision.**

- Remain self-sufficient
- Accomplish goals with a sense of independence
  - Maintain dignity and self-agency

# Appropriate Applicants

- Students whose permanent residence is in Allegheny, Beaver, Butler, Westmoreland, Washington, or Armstrong Counties
  - Can secure a cosigner

A qualified **cosigner** is a

- resident of Pennsylvania
- Credit score of 670 or higher



## Application Process

1. Online application.
2. Applicant is scheduled to meet with a Loan Committee on a Tuesday night via Zoom.
3. Committee approves or denies loan while on Zoom. Check is cut as soon as all signatures obtained, usually the week as the Loan Committee meeting.

**Confidential, quick, friendly, and respectful.**

# Free Financial Coaching





## Questions and Collaboration

Aviva's home office:

412-918-1937

[www.hflapgh.org](http://www.hflapgh.org)



Hebrew Free Loan  
Association Pittsburgh

## Additional Roundtable News:

- Gene Natali, CFA, of Troutwood will be speaking at our January 12<sup>th</sup> meeting. His follow up to *The Missing Semester* will soon be available.
- October 8th is this year's Act 48 program, and Gerri Walsh from FINRA is going to be presenting.

Registration -

<https://www.eventbrite.com/e/invest-with-understanding-financial-literacy-webinar-tickets-118962781883>

troutwood.com

youtube.com/channel/UC4fCgoqEwdH  
BbHKw-ifcJrA





# Amy Sawdey

Allegheny County

Higher Education Access Partner

717-433-3847

[asawdey@pheaa.org](mailto:asawdey@pheaa.org)



Master of Arts in Student Affairs in Higher Education  
from Indiana University of Pennsylvania



Previously worked at the University of Pittsburgh at  
Greensburg as a Financial Aid Specialist



Hobbies include playing board games, listening to  
music, volleyball, pickleball, indoor cycling