

# PA State Grant & Special Programs Update 2017 PASFAA Spring Training

Elizabeth McCloud

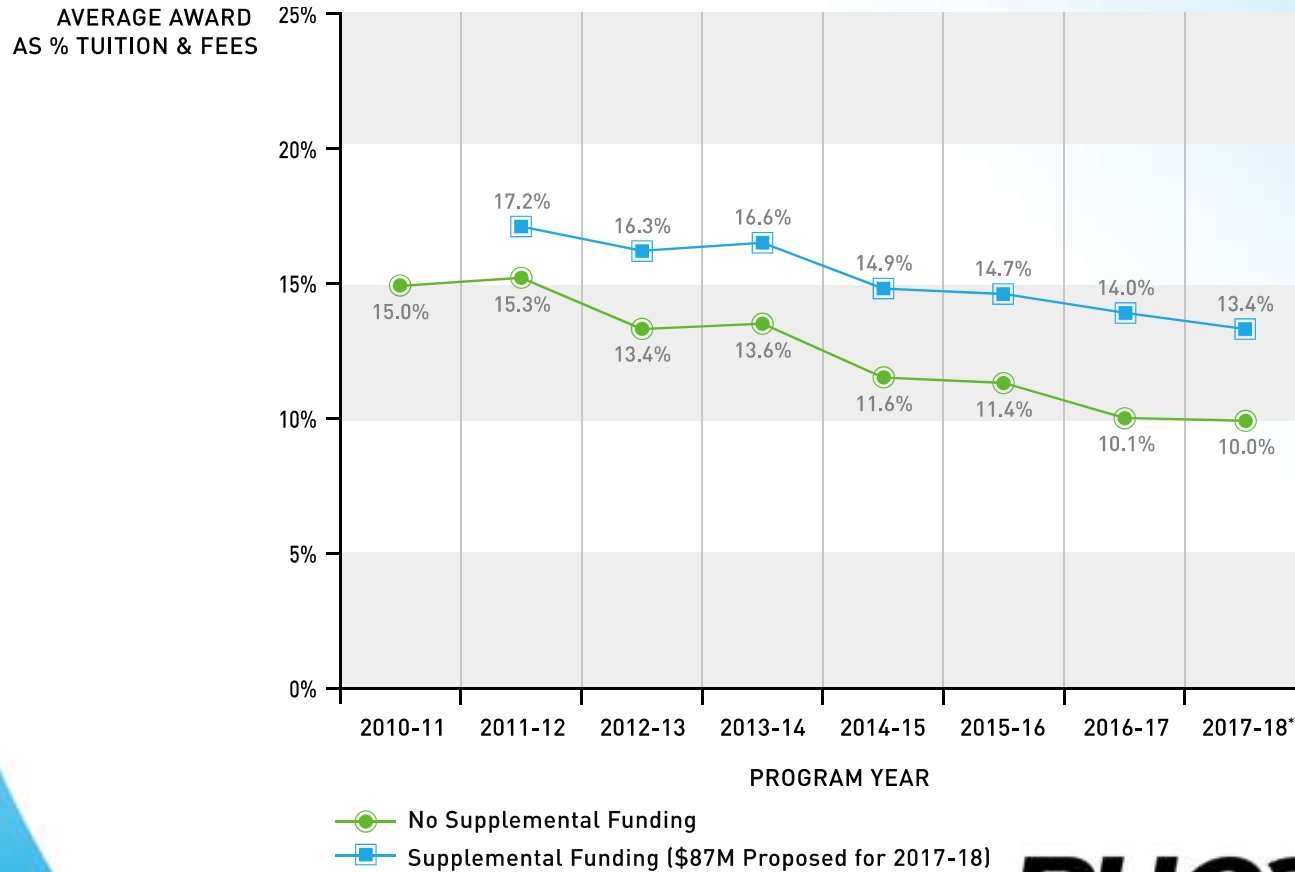
Vice President, State Grant and Special Programs  
PHEAA



# 2017-18 Appropriations

	2016-2017 Budget	2017-2018 Board Request	2017-2018 Governor's Proposals	Percent Change from 2016-2017 to 2017-2018
<b>PHEAA Administered</b>				
State Grant Program	\$272.891	\$352.029	\$272.891	0.00%
Institutional Assistance Grants (IAG)	\$25.749	\$27.036	\$12.874*	-0.50%
Matching Funds	\$12.496	\$13.121	\$12.496	0.00%
Higher Education of the Disadvantaged (Act 101)	\$2.246	\$2.358	\$2.246	0.00%
Higher Education of Blind or Deaf Students	\$0.047	\$0.049	\$0.047	0.00%
Pennsylvania Internship Program Grants	\$0.350	\$0.350	\$0.350	0.00%
Ready to Succeed Scholarships	\$5.000	\$5.000	\$5.000	0.00%
<b>Co-Administered</b>				
Bond-Hill Scholarship	\$0.697	\$0.697	\$0.697	0.00%
Cheyney Keystone Academy	\$1.813	\$3.500	\$1.813	0.00%
<b>Total</b>	<b>\$321.289</b>	<b>\$404.140</b>	<b>\$308.414</b>	<b>-0.04%</b>

# Purchasing Power



# Application History

History of Applications Received/Awards Made			
Award Year	Combined Academic Year and Summer		FAFSA
	State Grant Applications	Awards	Applications as of December 31
2007-08	538,112	174,643	564,896
2008-09	564,789	164,633	597,713
2009-10	631,624	183,217	672,813
2010-11	657,251	192,121	705,825
2011-12	668,067	205,739	716,557
2012-13	683,221	192,386	706,813
2013-14	669,570	178,681	692,056
2014-15	644,472	173,142	670,214
2015-16	610,562	153,684	639,662
2016-17*	583,086	140,000	606,768
2017-18*	559,763	136,000	582,497

\* Estimated

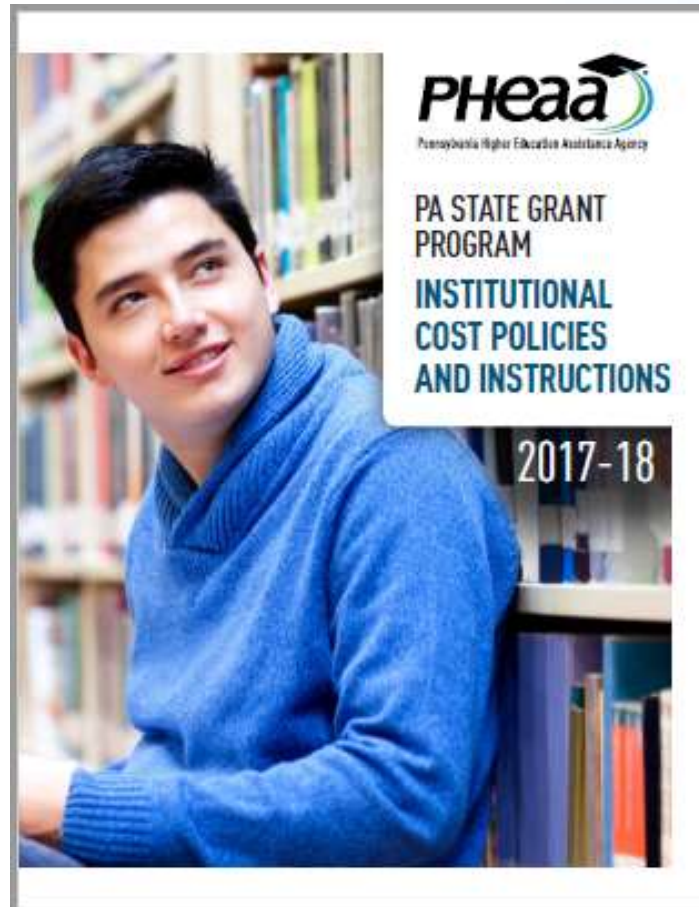
# Early FAFSA

- PHEAA has
  - Provided early outreach through Access Partners
  - Moved-up distribution of publications
  - Released SGF on October 1 with FAFSA release
  - Provided 2017-18 Early Estimator in October

# Early FAFSA

- PHEAA will
  - Announce conditional awards in May
  - Announce final awards with passage of the Commonwealth budget
  - Accept Reduced Income occurring in the 2017 calendar year
  - Verification selection based on PHEAA parameters

# 2017-18 Cost on the Web



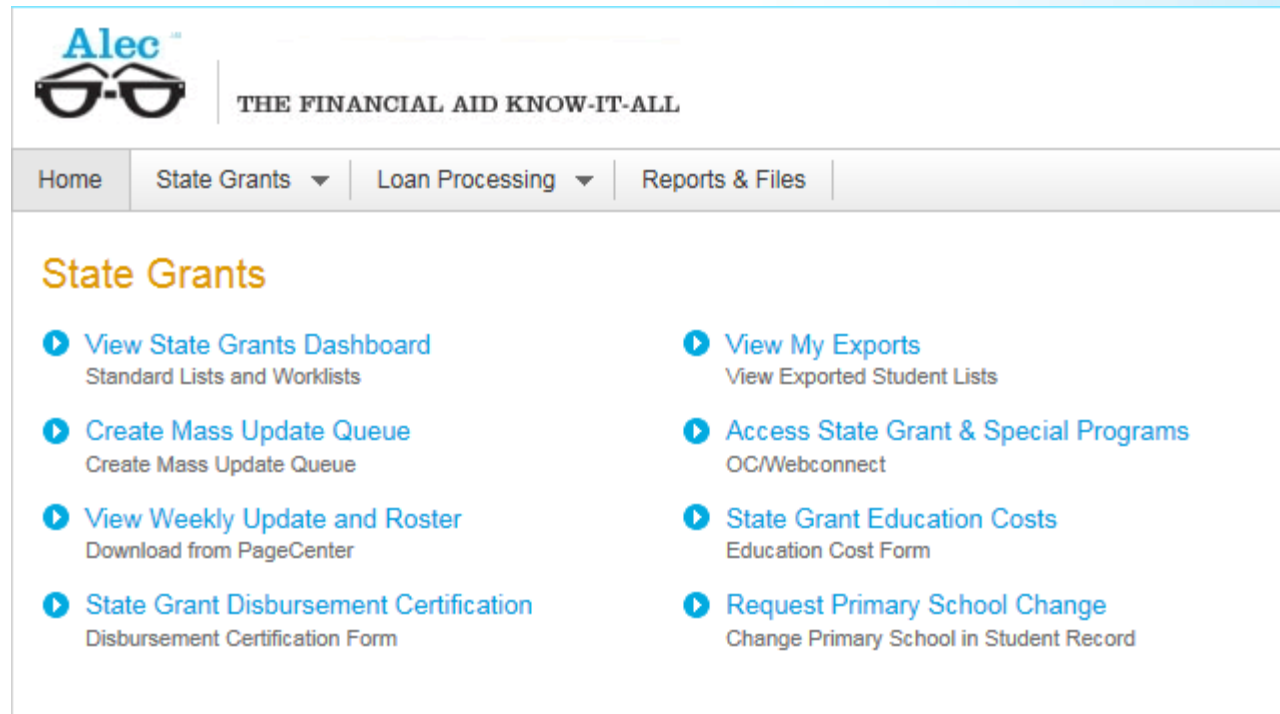


# 2017-18 Cost on the Web

- Cost collection applicable for 2017 Summer term and 2017-18 Academic Year
- Opened on March 10
- Due date for submission is April 11, 2017
- Provide room and board amounts for statistical purposes
- 2016-17 costs used if new data is not submitted



# 2017-18 Cost on the Web



The screenshot shows the Alec web application interface. At the top left is the Alec logo, which consists of the word "Alec" in blue above a pair of black-rimmed glasses. To the right of the logo is the tagline "THE FINANCIAL AID KNOW-IT-ALL". Below the logo and tagline is a navigation menu with four items: "Home", "State Grants" (with a dropdown arrow), "Loan Processing" (with a dropdown arrow), and "Reports & Files". The "State Grants" section is highlighted in orange. Below the navigation menu, there are eight links arranged in two columns, each with a blue play button icon. The links are: "View State Grants Dashboard" (with subtext "Standard Lists and Worklists"), "View My Exports" (with subtext "View Exported Student Lists"), "Create Mass Update Queue" (with subtext "Create Mass Update Queue"), "Access State Grant & Special Programs" (with subtext "OC/Webconnect"), "View Weekly Update and Roster" (with subtext "Download from PageCenter"), "State Grant Education Costs" (with subtext "Education Cost Form"), "State Grant Disbursement Certification" (with subtext "Disbursement Certification Form"), and "Request Primary School Change" (with subtext "Change Primary School in Student Record").

**Alec**  
THE FINANCIAL AID KNOW-IT-ALL

Home | State Grants ▼ | Loan Processing ▼ | Reports & Files

## State Grants

- ▶ View State Grants Dashboard  
Standard Lists and Worklists
- ▶ View My Exports  
View Exported Student Lists
- ▶ Create Mass Update Queue  
Create Mass Update Queue
- ▶ Access State Grant & Special Programs  
OC/Webconnect
- ▶ View Weekly Update and Roster  
Download from PageCenter
- ▶ State Grant Education Costs  
Education Cost Form
- ▶ State Grant Disbursement Certification  
Disbursement Certification Form
- ▶ Request Primary School Change  
Change Primary School in Student Record

# 2017-18 State Grant Training

**SAVE  
- THE -  
DATE**

**THE 2017-18 STATE GRANT  
PROGRAM WORKSHOPS  
ARE COMING TO A  
LOCATION NEAR YOU!**

**WORKSHOP DATES & LOCATIONS:**

- June 15, 2017 – La Salle University
- June 20, 2017 – Community College of Allegheny County - North
- July 13, 2017 – Westmoreland County Community College
- July 20, 2017 – Delaware County Community College
- July 25, 2017 – King's College
- July 27, 2017 – PHEAA Headquarters

Registration details  
will be announced in  
the coming weeks.

GR-WSTDP 022217

**PHEAA**  
Pennsylvania Higher Education Assistance Agency

# 2017-18 State Grant Training

Workshops offered this summer

Workshop Details		
Location	Date	Time
La Salle University	Thursday, June 15, 2017	9:00 a.m. - 1:00 p.m
Community College of Allegheny County - North	Tuesday, June 20, 2017	9:00 a.m. - 1:00 p.m
Westmoreland County Community College	Thursday, July 13, 2017	9:00 a.m. - 1:00 p.m
Delaware County Community College	Thursday, July 20, 2017	9:00 a.m. - 1:00 p.m
King's College	Tuesday, July 25, 2017	9:00 a.m. - 1:00 p.m
PHEAA Headquarters	Thursday, July 27, 2017	9:00 a.m. - 1:00 p.m

# 2017-18 State Grant Training

- 2017-18 State Grant Program Handbook
  - \*New\* Appendix J
    - “Determining Students’ Status and Providing Assistance”
      - Resources for resolving incomplete student records

# 2016-17 Awards

- Please cancel any active awards for students who are not eligible as currently indicated on school roster
- April 1, 2017 is the deadline for reinstatement or reconsideration of a 2016-17 State Grant award

# 2016-17 Reconciliation

- 2016-17 AY Reconciliation Rosters generate March 27
- Due date for reconciliation and refunds is June 1
- Sign and submit the Certification Page of the roster, preferably using the **online Web Certification Page** available on Alec



# 2017 Summer State Grant

- Reminder of change with Summer 2017  
Minimum term = 5 weeks of at least HT enrollment for students in degree-granting programs
- Student application period is March 15 through August 15
- Awards not determined until after 2017-18 AY awards are announced
- Disbursements to schools at calculated percentage of prior three years utilization



# Domicile Requirement

Current policy through 2016-17:

Student must be a PA resident for 12 months before May 1 (or August 1), exclusive of enrollment in a PA educational institution

# Domicile Policy

Effective with the 2017-18 Award Year:

Students attending a community college or BTT school located in PA still have to meet the 12 month domicile requirement, *however* the exclusion of enrollment in school is no longer applicable

# Home School

- Home School instructions for the State Grant Form have been modified
  - to better serve home-schooled students who received a diploma via Act 196
  - graduated on or after October 31, 2014

# SAP Clarification

Counting a repeated class when it was first taken during a term in which no State Grant was received.

- First year: no grant, student earns a "D" in one class
- Sophomore year: student takes 24 credits, repeats the "D" class, has a full-time State Grant
- Junior year: Guidelines had changed for 2016-17 to say that repeated course could not be counted and thus the student would fail progress
- **Return to previous policy that permitted a repeat course to be counted in this situation**

# Document Library

- New naming convention for documents
- Reordering of documents in reverse chronological order
- Only retaining documents in the three most recent processing years

# Headquartered and Domiciled

- A survey to ascertain headquartered and domiciled status required by June 30, 2017 for continued participation in the 2017-18 State Grant Program.

# 2017-18 Reciprocity

- Reciprocal states for 2017-18:
  - DC
  - DE
  - MA
  - OH
  - VT
  - WV



# SGDEPP: 2016-17

- 2016-17 funding had been exhausted in late fall, leading to Reject N and \$-Adjusted notices for some students
- PHEAA was able to make cancellation and reject funds available, and subsequently has been able to fund Spring 2017 awards
- It is likely that funding will also be available for Summer 2017
  - **nominate your students!**

# SGDEPP: 2017-18 and beyond

- 2017-18 is the last year of the five year State Grant Distance Education Pilot Program
  - The program has expanded each year
  - Legislation to integrate stalled in the fall
  - Three potential paths forward for DE

# Ready to Succeed Scholarship

- Funds over 3,000 students per year with \$5 M
- Approximately \$10 M more needed to fund all of the remaining 6,000+ eligible students
- Reconciliation begins early May; due July 1
- August 1 disbursement deadline

# IAG

- SG reconciliation must be completed by late April to be reflected on the IAG reconciliation roster in early May
- Estimated *per capita* for 2016-17 is \$644, subject to change
- Proposed 2017-18 budget for IAG would lead to an estimated 2017-18 *per capita* of \$330

# 2017 Summer SWSP Application

## 2017 SUMMER PENNSYLVANIA STATE WORK•STUDY APPLICATION



### Frequently Asked Questions

**What is the SWSP?**  
The State Work•Study Program is a PHEAA-sponsored program made possible through General Assembly funding and with the cooperation of Pennsylvania postsecondary institutions and employers. The purpose of the SWSP is to provide students with an opportunity to gain career-related work experience and, at the same time, earn funds to assist them in covering today's costs for postsecondary education.

**How Much Can I Earn?**  
State-funded employer awards will be notified of your SWSP award amount, which can be up to \$4,000 during the summer term. This award amount is the maximum amount of earnings an employer may submit to PHEAA for reimbursement. However, your employer may choose to pay you more than the fixed award amount.

PHEAA will reimburse your employer a percentage of every dollar earned up to your SWSP award amount. Your employer is required to pay you 100 percent of any earnings above your SWSP award amount.

Continued on next page



Pennsylvania Higher Education Assistance Agency

### How to Apply

- 1 **DETERMINE IF YOU ARE AN ELIGIBLE STUDENT**

To be considered eligible, you must:

  - Be a Pennsylvania resident.
  - Be enrolled at least half-time in or more credits during the preceding or upcoming academic year in a PHEAA-approved higher education institution, in a program of study at least one year in length.
  - Be a State Grant recipient, if an undergraduate student, or have a loan financial need verified by the student's financial aid office, if a graduate student for the preceding or upcoming academic year.
  - Be able to benefit from a career-related work experience.
  - Not be in default or pending default on an education loan or owe a State Grant refund.
- 2 **FIND AN ELIGIBLE JOB**

To find an eligible SWSP employer, you can:

  - Search for an approved SWSP employer online at [PHEAA.org/SWSP-adsSearch](http://PHEAA.org/SWSP-adsSearch)
  - Locate your own employer. Tips for locating an employer, as well as an employer or employer recommendations to introduce a new employer to the program, are available at [PHEAA.org/employers](http://PHEAA.org/employers).
- 3 **APPLY**

To apply you must:

  - Complete Section I of the SWSP Application/Placement Form and submit it to your potential employer to complete Section 2.
  - Submit, or verify that your employer submitted, the completed SWSP Application/Placement Form to PHEAA on or before the filing deadline. PHEAA will then notify you and your employer of your SWSP eligibility.

STUDENT APPLICATION FILING DEADLINES	
Work Term	Deadline
2017 Summer Term (May 7, 2017 – August 12, 2017)	June 20, 2017

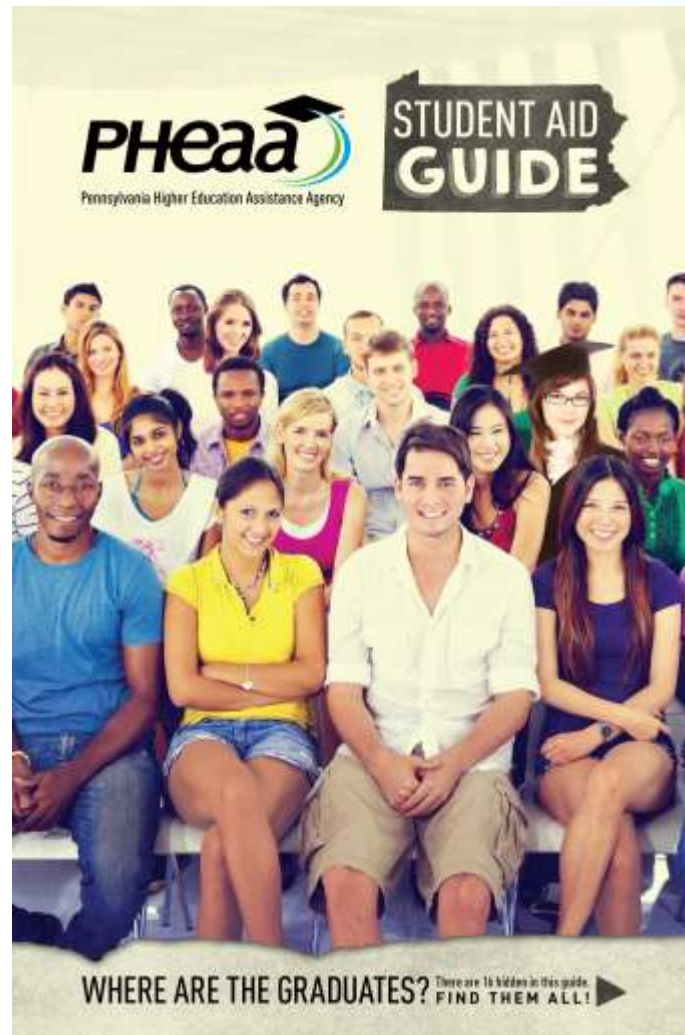
\*SWSP Application/Placement Form is available in this document and is also available at [PHEAA.org](http://PHEAA.org)

# 2016-17 PA-TIP

- EFC eligibility up to 12000
- Student application deadline is May 1, 2017
- School deadline to certify pending awards is July 1, 2017
- EFC and aid resources are no longer to be included in the award calculation for veterans of the U.S. Armed Forces who were honorably discharged



# PA Student Aid Guide





# FAFSA Completion Initiative

- FAFSA Completion Initiative is a presidential initiative promoted by USDE in which PA participates
- Provides FAFSA completion data to Local Educational Agencies (LEAs) and other designated entities
- Data elements include:
  - Name, date of birth, zip code, FAFSA submission and processing date, completion status

# High School Initiatives

- PHEAA will continue to send Certificates of Merit to the top 5,000 scorers on SAT/ACT tests.
- FAFSA Completion Initiative continues with high schools and school districts.
- Access Partners conducting FAFSA Completion and College Information presentations.

# High School Initiatives

- *Funding Your Future* brochures sent to high school seniors in December
- Follow-up postcards to non-FAFSA filers in March



## APPLYING FOR FINANCIAL AID

Nearly two-thirds of students receive some type of financial aid. Consider all types of financial aid to help with higher education expenses. There are three types of aid. Grants and scholarships are free money and do not have to be repaid. Work-study provides part-time jobs for students with financial need. Loans must be repaid—with interest.

### FAFSA® (Free Application for Federal Student Aid)

The FAFSA is the most important form you must complete to qualify for almost all types of financial aid, including the PA State Grant.

- The FAFSA is available October 1 for the upcoming academic year; complete and file it as soon as possible, as many state, local and private entities use the FAFSA to determine eligibility for grants and scholarships.
- File the FAFSA electronically at [FAFSA.gov](http://FAFSA.gov). It speeds up turnaround time and helps eliminate errors.
- A PDF of the FAFSA is available for download at [FAFSA.gov](http://FAFSA.gov), or by calling the U.S. Department of Education toll-free at 800.4.FED.AID.
- Filing the FAFSA is always free; if you are asked to pay, you are not on the official government website, [FAFSA.gov](http://FAFSA.gov).
- Students and parents can electronically sign the FAFSA using their FSA ID. All students and parents are encouraged to sign up for their FSA ID prior to completing their FAFSA.



### FSA ID

Every student should have a FSA ID, made up of a username and password, to electronically sign the FAFSA.

- To create a FSA ID, you will provide your Social Security Number, name, date of birth, mailing address, email address, telephone number, and language preference.
- A dependent student will also need to have one legal parent sign the student's FAFSA, so the parent needs a FSA ID, as well. Parents with more than one child attending college can use the same FSA ID to sign all applications.
- If you have previously accessed the FAFSA with a PIN, you have the option of entering your PIN while registering for the FSA ID. This will expedite the process.

**NOTE:** Each FSA ID user must have a unique email address.

**IF YOU WANT TO GO TO COLLEGE,  
PHEAA CAN HELP YOU PLAN TO PAY FOR IT.**

# High School Initiatives



**NEED MONEY FOR COLLEGE?**  
**START WITH THE**  
**FAFSA®**  
Free Application for Federal Student Aid

**PHeaa**  
PHEAA.org/FAFSA1

**DEADLINES ARE APPROACHING!**

**MAY 1**  
If you plan to enroll in a degree program or a college transferable program at a junior college or other college or university (excludes community colleges and designated PA Open-Admission institutions)

**AUGUST 1**  
If you plan to enroll in a community college; a designated PA Open-Admission institution; a business, trade or technical school; a hospital school of nursing; or a 2-year program that is not transferable to another institution

GR-FSAPE 022516



Presorted First Class  
US Postage Paid  
PHEAA

The FAFSA is required for many grants & scholarships.  
Visit [PHEAA.org/FAFSA1](http://PHEAA.org/FAFSA1) to get started.  
Connect directly from the FAFSA to the State Grant Form (SGF) to complete both applications.

**TIME is RUNNING OUT...**  
File the FAFSA today!





# Renewal Student Reminder



May 1st is the deadline for submitting your FAFSA if you are applying for a PA State Grant.

You must fill out the FAFSA form again if you are seeking financial aid for the upcoming school year. By submitting the FAFSA online, you take the crucial first step to determine if you qualify for a PA State Grant in addition to Federal Pell Grant, low-cost federal student loans, and many scholarships.

[Get Started Today](#)

Filing the FAFSA adds up to money for college.



You are receiving this e-mail because you previously provided PHEAA with your e-mail contact information. If you want to be excluded from future e-mail messages, please unsubscribe [here](#).

**MAY 1**

**FAFSA<sup>®</sup>**  
**FILING**  
**DEADLINE**



[PHEAA.org/FAFSA2](http://PHEAA.org/FAFSA2)

**YOU CAN'T**  
**BE LATE!**

# Other Web Resources



# Program Contacts

- Mailboxes:

- [sghelp@pheaa.org](mailto:sghelp@pheaa.org)
- [act101@pheaa.org](mailto:act101@pheaa.org)
- [bdbg@pheaa.org](mailto:bdbg@pheaa.org)
- [eap@pheaa.org](mailto:eap@pheaa.org)
- [iag@pheaa.org](mailto:iag@pheaa.org)
- [swsp@pheaa.org](mailto:swsp@pheaa.org)
- [matchingfunds@pheaa.org](mailto:matchingfunds@pheaa.org)
- [paetg@pheaa.org](mailto:paetg@pheaa.org)
- [path@pheaa.org](mailto:path@pheaa.org)
- [patip@pheaa.org](mailto:patip@pheaa.org)
- [pegp@pheaa.org](mailto:pegp@pheaa.org)
- [rtss@pheaa.org](mailto:rtss@pheaa.org)



# Questions? Comments?

- Elizabeth McCloud
  - 717.720.1600
  - [emccloud@pheaa.org](mailto:emccloud@pheaa.org)