



PHEAA

State Grant & Special Programs Update

James L. Preston
Elizabeth McCloud

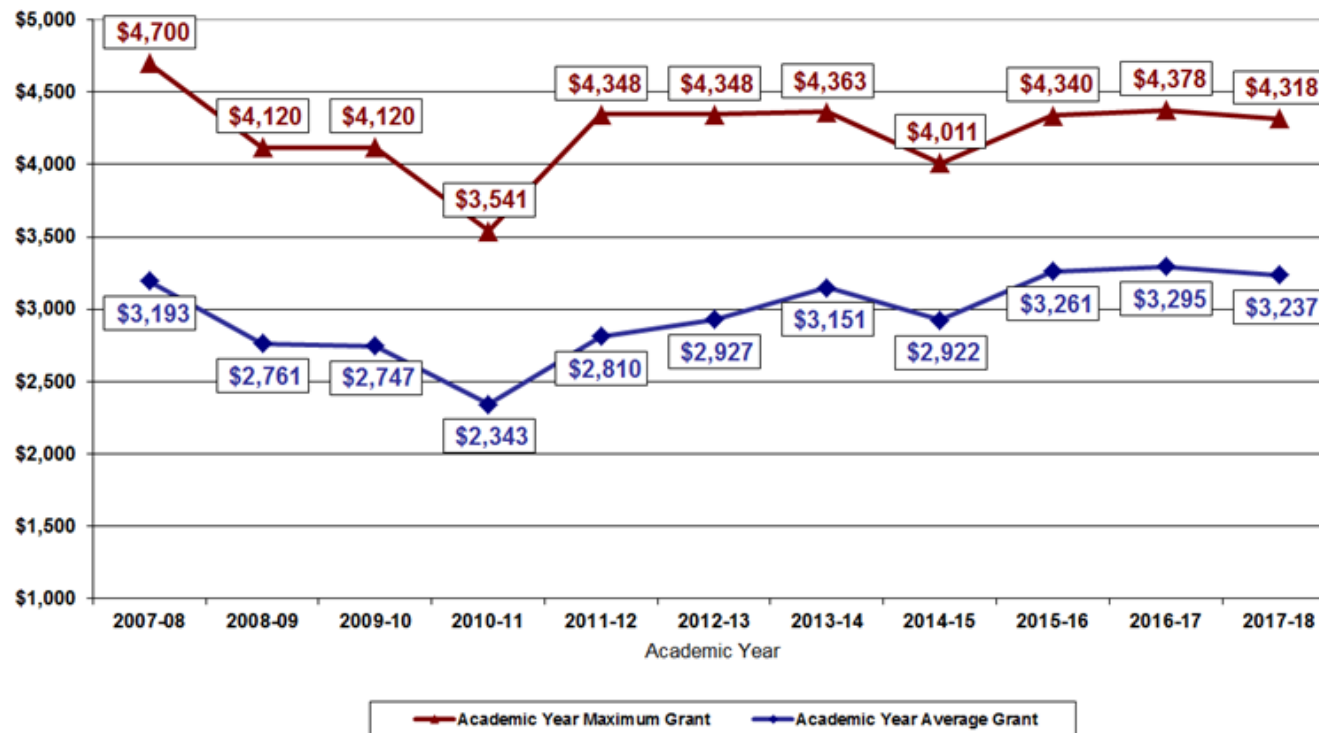
2017-18 Appropriations

2017-2018 COMMONWEALTH APPROPRIATIONS PHEAA OVERVIEW

Programs (in millions)	2016-2017 Budget	2017-2018 PHEAA Requested Budget	2017-2018 Governor's Recommendation	2017-2018 Approved Budget
Pennsylvania State Grant Program	\$272.891	\$352.029	\$272.891	\$273.391
Institutional Assistance Grants (IAG) Program	25.749	27.036	12.874	25.749
Matching Funds Program	12.496	13.121	12.496	12.496
Horace Mann Bond-Leslie Pinckney Hill Scholarship Program	.697	.697	.697	.697
Cheyney University Keystone Academy Program	1.813	3.500	1.813	1.813
Higher Education for the Disadvantaged (Act 101)	2.246	2.358	2.246	2.246
Higher Education for Blind or Deaf Students	.047	.049	.047	.047
Pennsylvania Internship Program Grants	.350	.350	.350	.350
Ready to Succeed Scholarships	5.000	5.000	5.000	5.000
TOTAL	\$321.289	\$404.140	\$308.414	\$321.789

Award History

**Average and Maximum State Grants to
Pennsylvania College Students, 2007 to 2017**



2017-18 State Grant Awards

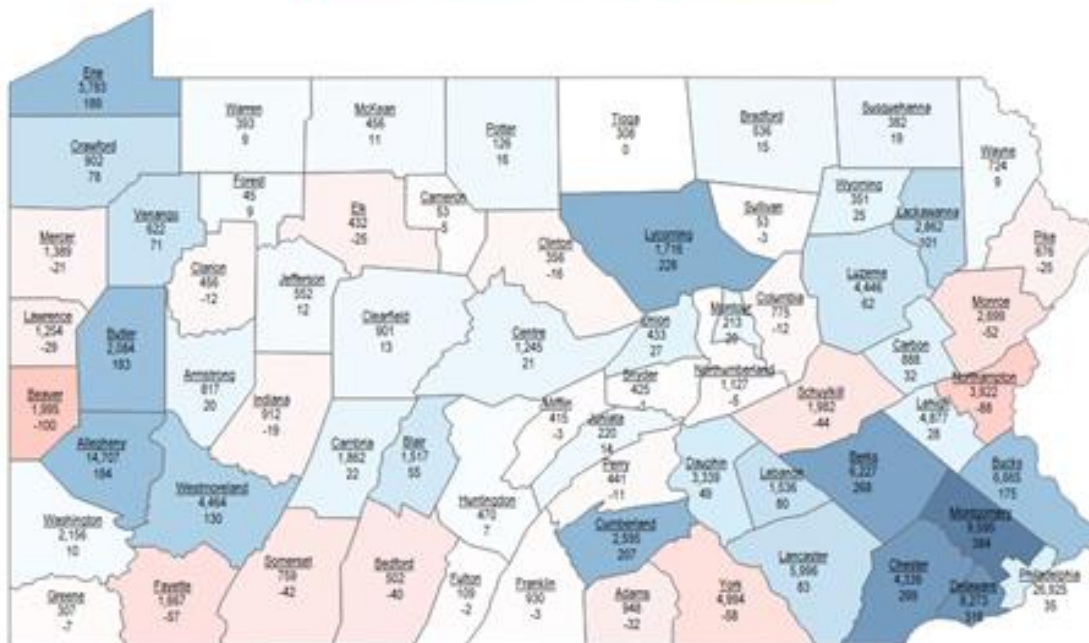
- Early FAFSA worked!
 - July Memo to Schools:
 - Fall and Winter term awards = Final
 - Spring awards = Tentative
 - Cancellations from Fall rosters
 - Tracking slightly ahead of prior year, but not a dramatic difference

Application History

Pennsylvania State Grant Recipients

The change in the number of State Grant recipients from 2016-17 to 2017-18, per County

-400 400



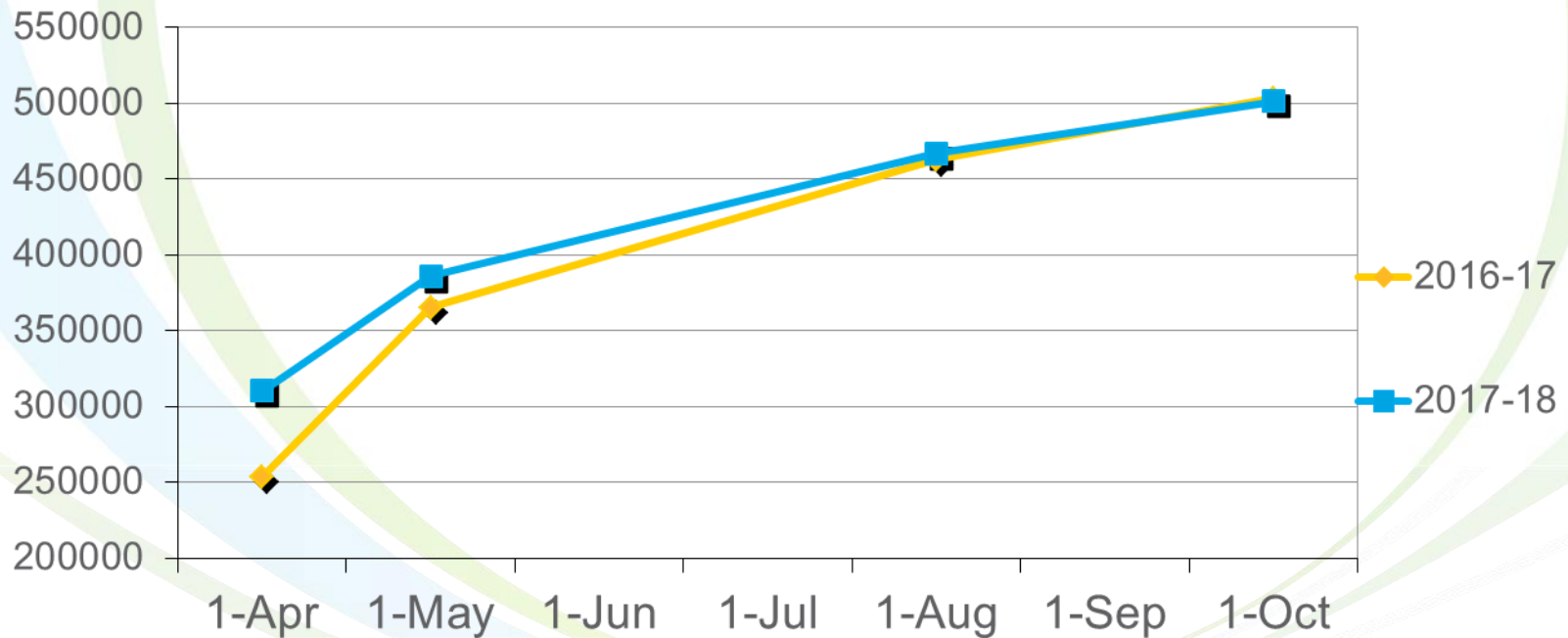
This map represents each county's change in the number of State Grant recipients from 2016-17 to 2017-18, as of August 1, 2017. For each county, the first value represents the number of 2017-18 State Grant recipients and the second value represents the decrease or increase in the number of State Grant recipients from 2016-17. Overall, the number of State Grant recipients in Pennsylvania increased by 2,804 students or 1.78% from 2016-17 to 2017-18.

Application History – 6-Month Data

FAFSA and State Grant Applications - Six-Month Statistics						
Sector	2016-17 as of 7-1-2016		2017-18 as of 4-1-2017		Variance	
	FAFSA	State Grant	FAFSA	State Grant	FAFSA	State Grant
Pennsylvania Independent Four-Year Colleges and Universities	114,645	92,292	86,222	71,038	-24.8%	-23.0%
Pennsylvania State System of Higher Education Universities	75,257	68,610	52,281	48,024	-30.5%	-30.0%
Pennsylvania State-Related Universities	87,264	78,587	67,805	61,645	-22.3%	-21.6%
Pennsylvania Independent Two-Year Colleges	7,938	7,637	3,661	3,512	-53.9%	-54.0%
Pennsylvania Community Colleges	83,838	81,184	53,805	51,889	-35.8%	-36.1%
Pennsylvania Hospital Schools of Nursing	2,166	1,904	1,321	1,144	-39.0%	-39.9%
Pennsylvania Postsecondary Business, Trade, and Technical Schools	23,533	22,602	14,004	13,467	-40.5%	-40.4%
Out-of-State Institutions	88,371	69,517	68,586	55,114	-22.4%	-20.7%
Unknown	8,503	6,658	5,554	4,256	-34.7%	-36.1%
Total All Institutions	491,515	428,991	353,239	310,089	-28.1%	-27.7%



Application History



Application History

FAFSA and State Grant Applications 2016-17 vs. 2017-18 May 1 Deadline						
	FAFSA Applications			State Grant Applications		
	2016-17	2017-18	Variance	2016-17	2017-18	Variance
4-YR Private	103,536	109,333	5.60%	85,913	90,113	4.89%
PASSHE	66,062	67,323	1.91%	60,972	61,665	1.14%
State-Related	77,599	80,167	3.31%	70,648	72,600	2.76%
2-YR Private	4,889	4,240	-13.27%	4,708	4,050	-13.98%
Community College	65,016	71,817	10.46%	63,357	69,564	9.80%
Nursing	1,809	1,911	5.64%	1,616	1,662	2.85%
BTT	17,658	18,230	3.24%	17,039	17,557	3.04%
Out-of-State	71,634	80,474	12.34%	57,633	64,095	11.21%
Unknown	4,555	6,208	36.29%	3,364	4,716	40.19%
Total	412,758	439,703	6.53%	365,250	386,022	5.69%

FAFSA and State Grant Applications 2016-17 vs. 2017-18 as of October 1						
	FAFSA Applications			State Grant Applications		
	2016-17	2017-18	Variance	2016-17	2017-18	Variance
4-YR Private	130,052	132,064	1.55%	103,169	104,636	1.42%
PASSHE	82,703	82,288	-0.50%	74,570	73,885	-0.92%
State-Related	96,476	97,298	0.85%	86,182	86,746	0.65%
2-YR Private	7,080	5,847	-17.42%	6,776	5,585	-17.58%
Community College	112,472	111,842	-0.56%	108,927	107,961	-0.89%
Nursing	2,368	2,416	2.03%	2,064	2,072	0.39%
BTT	31,647	27,948	-11.69%	30,513	26,837	-12.05%
Out-of-State	105,574	109,242	3.47%	82,277	84,728	2.98%
Unknown	11,284	11,491	1.83%	8,991	9,039	0.53%
Total	579,656	580,436	0.13%	503,469	501,489	-0.39%

2017-18 State Grant Awards

- Spring Award reduction still necessary
- Likely range of reduction to awards:
 - \$23 off of the minimum adjusted award
 - \$195 off of the maximum award
- Updated awards coming soon!

Meanwhile...

- 2018-19 activity is underway
 - October 1 - application window opened
 - SGF also available October 1
 - Budget request submitted to Governor

2018-19 Processing

- Total 2017-18 FAFSA applications on the system as of October 15, 2016 -- 29,750
- Total 2018-19 FAFSA applications on the system as of October 16, 2017 -- 34,396
 - Currently up 16%, but with one extra day in the 2017-18 count

2018-19 Processing

- Mid-October:
 - SGF emails
 - Paper Status Notices and postcards
- Last week of October:
 - Grant Applicant Status (GAPS) reports
- Mid-November:
 - FAA Status Listings/transmission
 - Student Display (FG59)
 - Partner Interface activated

2018-19 Early Estimator

- Waiting for 2018-19 Pell Charts
- All schools must use for State Grant estimates
 - Provide uniform awards across sectors and schools
 - Awards must be +/- \$100 of Early Estimator

PA ABLE Accounts



www.paable.gov

- Contributions and earnings to these accounts are exempt from being used in the calculation of eligibility for any state financial aid programs.
- Just like the Pennsylvania Tuition Assistance Program (PA 529 Plan), the State Grant Program will exclude these account amounts from the “net worth of investments” when calculating an EFC.
- Effective with the 2018-19 Academic Year, [ABLE](#) account information is reportable via the State Grant Form (SGF).

Viewing 2018-19 SG Records

For a school listed as a 2 through 10 choice on the FAFSA:

- Cannot see the student's record in the State Grant system (FG59 or Partner Interface, including FG0B and FG7E).
- Estimates will not be provided via displays, status listings, or status transmissions.
- It is possible to not have the ability to view a student's State Grant record and then be able to view it if subsequent activity from the student changes the first school choice.
- **The planned OE Code ordering of schools on the 2018-19 FAFSA for State Grant Agencies did not happen!**

2018-19 Special Consideration

- PHEAA will use estimated 2018 income for special consideration requests.
- October 2018 validation conducted to review accuracy of estimates.

2018-19 Budget

2018-2019 State Grant and Special Programs Budget Request

Programs (in millions)	2016-2017 Budget	2017-2018 Budget	2018-2019 Requested Budget	2017-2018 to 2018-2019 Percent Change
Pennsylvania State Grant	\$272.891	\$273.391*	\$300.730	10.0%
Institutional Assistance Grants	25.749	25.749	27.036	5.0%
Matching Funds	12.496	12.496	13.121	5.0%
Higher Education for the Disadvantaged (Act 101)	2.246	2.246	2.358	5.0%
Higher Education for Blind or Deaf Students	0.047	0.047	0.049	4.3%
Cheyney University Keystone Academy	1.813	1.813**	4.000	120.6%
Horace Mann Bond-Leslie Pinckney Hill Scholarship	0.697	0.697	1.200	72.2%
Pennsylvania Internship Program Grants	0.350	0.350	0.350	0.0%
Ready to Succeed Scholarships	5.000	5.000	5.000	0.0%
Total	\$321.289	\$321.789	\$353.844	10.0%

*The 2017-2018 appropriation includes \$500,000 that likely will be directed by the General Assembly to Mansfield University once the 2017-2018 fiscal code is finalized.

**It is contemplated that, once the 2017-2018 fiscal code is finalized, the General Assembly will direct \$500,000 of Agency resources to the program.

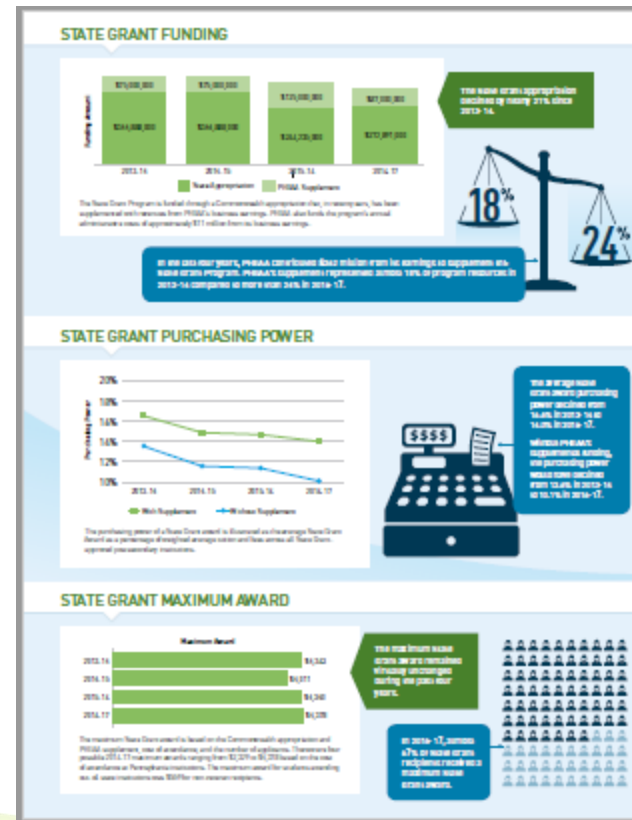
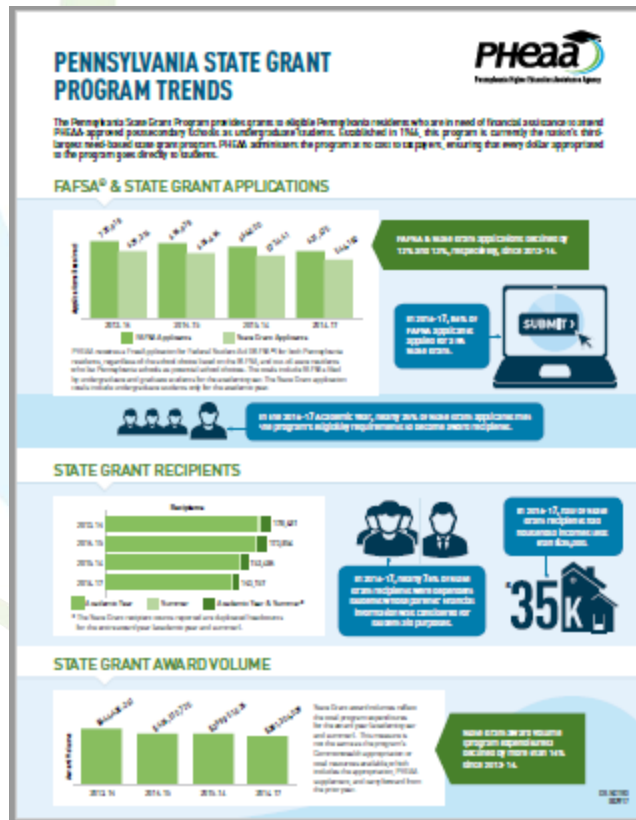
Distance Education

- DE Pilot sunsets at end of 2017-18
- Legislation in process to integrate DE into overall State Grant program for 2018-19
 - HB 1653
 - SB 53
- Talking points and op-ed language available for school use

Distance Education

- Eligible institutions are headquartered and domiciled in PA
- PHEAA Board has authority to manage cost to the program of DE awards
- Updated reporting mechanism for each recipient's classroom vs. online credits
- No more SGDEPP reporting after 2017-18 AY

PA State Grant Program Trends



2017 Summer State Grant

- Minimum number of weeks of enrollment decreased to 5 weeks
- Continued decline in summer program participation
 - 2015: 10,424 awards (\$11,585,623)
 - 2016: 8,280 awards (\$10,236,403)
 - 2017: 7,799 awards (\$ 9,536,493)

IAG

- 2016-17 *per capita* of \$644
- Received flat funding for 2017-18
- Estimated *per capita* for 2017-18 is \$634
 - Advance payment coming soon

Incomplete State Grant Records

- Email campaign to reduce incomplete records
- Sending to prior-year applicants
- Goal to complete files by April 1 deadline

Other Sibling Audit

- Process ran in late September
 - Last run in 2014, will be annual moving forward
- Students selected have reported a higher number enrolled than can be verified in our system
- Students selected for the review need to complete a form and submit verification of a family member's enrollment (e.g., copy of the class schedule, tuition bill, letter from the registrar, etc.)

Bona Fide Five-Year Program

- Permits up to an additional year of State Grant eligibility
- Reported through the annual cost collection effort
- PHEAA review of reported programs revealed many programs misreported
- Reaching out to a few schools again this year


Out-of-State Awards

- Reciprocal states for 2017-18 include DC, DE, MA, OH, VT, and WV
- Reminder: Eligibility for unique programs of study at schools in non-reciprocal states discontinued beginning with 2017-18









Program Review - Reminder

- Beginning with reviews covering the 2016-17 Award Year:
 - Error Rate calculations will be based on mispayment of a student award by plus or minus \$50. This includes non-payment of funds to an eligible student.
 - An Administrative Findings section will address concerns with program administration
 - A Program Improvement Plan (PIP) may be required to address findings

ACICS

- Accrediting Council for Independent Colleges and Schools lost recognition from USDE
 - ACICS appealing ruling
 - Schools remain accredited during the appeal
 - SG regulations require accreditation
-
- 
- **Notify PHEAA immediately upon gaining new accreditation!** ProgramReview@PHEAA.org

Partner Interface Filtering Tips

- June 2017 resource for schools
- Available on pheaa.org
 - [Partner Interface Display Overview](#) 
 - [Partner Interface Q&A](#) 
 - [Partner Interface Filtering Tips](#)  Revised June 2017
 - [Partner Interface Overview Presentation Part 1](#) 
 - [Partner Interface Overview Presentation Part 2](#) 
 - [Distance Education Partner Interface User Guide](#) 
 - [Ready to Succeed Partner Interface User Guide](#) 
 - [State Grant Partner Interface User Guide](#) 



OC/WebConnect

- Did you know that you can view the status of your State Grant, RTSS, and SGDEPP information in OC/WebConnect?
- Check out **FG3S** in OC/ WebConnect to view the status of your disbursements, refunds, and rosters. In the Program Type field, use “G” for State Grant, “S” for RTSS, or “D” for SGDEPP.

Faxes

- Schools may contact State Grant and Special Programs to verify receipt of faxed correspondence
- Note: Faxes take up to 24 hours to show in the proper queue
 - Please wait 24 hours before calling in to check
 - Email is best: staff will respond in 24-48 hours

Speaking of Emails...

Program Mailboxes - Automated responses now generated

From students, schools, partners:

StateGrantandSpecialPrograms@
pheaa.org
granthelp@pheaa.org
sghelp@pheaa.org
specialprogramscorr@pheaa.org
swsp@pheaa.org
rtss@pheaa.org
eap@pheaa.org
bdbg@pheaa.org
path@pheaa.org
patip@pheaa.org
nets@pheaa.org
paetg@pheaa.org

For use of schools ONLY:

IAG@pheaa.org
act 101@pheaa.org
matchingfunds@pheaa.org
sgdepp@pheaa.org
pegp@pheaa.org
High School Access@pheaa.org

E-Sign is in the works!


- E-Sign = “No Sign”
- Applicants will continue to complete the State Grant Form
- No longer will have to print, sign, and mail the signature pages

Rollout planned for Spring 2018!

Training Webpage

- PHEAA.org/training
 - Program Integrity staff created a one-stop shop
 - Covers every PHEAA-administered program (except NETS)
 - For schools, employers, and partners
- Student resources, memos, and apps
 - Still available in Doc Library or on program webpages

Training Webpage



I want to...
Select and go to...

Search Site:

HomeCollege PlanningFunding OpportunitiesPartner AccessTools & Resources

K-12 Counselors

Schools

Resources and Training

Partner Interface Training

State Grant and Special Programs Resources

Training Events

K-12 Counselor Workshops

State Work-Study Employers

PHEAA Federal Work-Study Programs


PA-TIP Schools and Employers

RTSS Schools

Community Partners

Lenders

Resources and Training



Education is of the utmost importance to us here at PHEAA.

That is why we want to ensure that our school, employers, and community partners have easy access to various resources in one easy-to-use location. From this page you will be able to:

- View training events
- Sign up for educational workshops
- Locate resources for many of the PHEAA-administered programs

Partner Interface Training

Let us help you keep current with the latest tools for postsecondary schools to report and verify key components used in evaluating eligibility and disbursement for State Grant awards.

State Grant and Special Programs Resources

View and download a wide range of resources that will provide you with program-specific information essential for your staff and students.

Training Events

View our training events, including those sponsored by Pennsylvania Financial Aid Training (PFAT), Pennsylvania School Services, and Pennsylvania State Grant and Special Programs.

K-12 Counselor Workshops

To ensure you have the tools students need to reach their educational goals, we offer free workshops for high school counselors and teachers.

Alec Partner Access

Sign In

Request/Approve Access System

Contact Us

Need more information on the State Grant Program or the other Special Programs?

Don't hesitate to [contact us!](#)

Online Training

Need to attend an online PHEAA training session?

[Sign up for a webinar.](#)

PHEAA.org/LivingSituation

- Assists students with selecting the correct living situation when completing a Status Notice for the PA State Grant Program
- Directions for students when they are considered Independent for federal aid but Dependent for State Grant
- Guidance on two types of living situations:
 - “In the care of a person (guardian)/appointed entity”
 - “Unmarried and in my own care”

NEW! FWS Program Webpage

<http://www.pheaa.org/partner-access/federal-work-study.shtml>



I want to...

Select and go to...

Search Site:



Home

College Planning

Funding Opportunities

Partner Access

Tools & Resources

K-12 Counselors

Schools

Resources and Training

State Work-Study
Employers

PHEAA Federal Work-Study
Programs

PA-TIP Schools and
Employers

RTSS Schools

Community Partners

Lenders

PHEAA Federal Work-Study Programs

PHEAA administers the Federal Work-Study On-Campus (FWS-ON) and Community Service (FWS-CS) Programs to make matching funds available to eligible postsecondary institutions that apply for and receive federal dollars through the Federal Work-Study Program.

Available Programs

For more information, select the program below:

+ FWS-ON

+ FWS-CS

Institutional Eligibility

To be eligible to participate in PHEAA's FWS-ON or FWS-CS programs, an institution must:

- Be federally Title IV approved
- Be located in the Commonwealth of Pennsylvania
- Receive an FWS Program appropriation through the United States Department of Education (USDE)
- Be approved for FWS-ON or FWS-CS participation by PHEAA

How to Apply

To apply for participation, please contact us via email at matchingfunds@pheaa.org.

Your institution will be required to execute a PHEAA State Grant and Special Programs Master Agreement and an FWS-ON or FWS-CS Program Schedule.

Program Materials

Contact Us

☎ 1-800-443-0646,
Option 2, Option 3

✉ matchingfunds@pheaa.org



Pennsylvania Higher Education Assistance Agency

RTSS-SGDEPP Reconciliation Page

- Page 4 of FG3S

FG3S I 2016;A;S;00326700;01;0100		RTSS COLLEGE RECONCILIATION DISPLAY	
OE CODE	00326700 01	APPLICATION YEAR	2016-17
PHEAA CODE	010075	ACAD YEAR	
GENEVA COLLEGE		LAST USER	FGXVA
		LAST UPDATE	08/14/2017
RECONCILIATION DETAIL SUMMARY			
TOTAL AWARDS	\$	9,000	REMAINING FUNDS DUE
			NEEDS CERTIFIED \$
ACTUAL DISBURSED AMOUNT	\$	11,000	CERTIFIED \$
			TOTAL \$
TOTAL COLLEGE REFUND	\$	0	
TOTAL PROGRAM REVIEW REFUND	\$	0	OUTSTANDING REFUNDS
			TOTAL \$
		CLEAN ROSTER NEEDED	YES
		RECONCILED NO	08/14/2017
F1=HELP	F2=FG3Y	F3=EXIT	F4=SUMMARY
F7=	F8=	F9=PRT	F10=PAGEBK
			F11=PAGEFWD
			F12=CAN
TT		0 1,2 B	

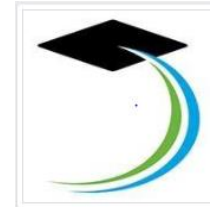
Patriot Act

- Effective 2018-19:
 - Students listing a P.O. Box address will continue to receive a letter requesting that a physical address be submitted.
 - State Grant records will no longer be held from processing for eligibility due to only having a P.O. Box on file.

Customer Experience (CX)

Social Media

- PHEAA Brand on Facebook and Twitter



Sentiment Surveys

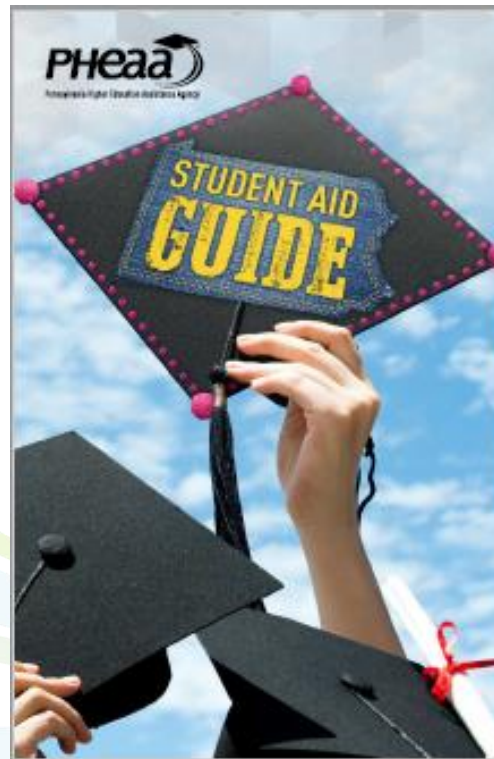
- Began sending to State Grant applicants over the summer

Email Campaign

- Effort to reduce incomplete State Grant records

Outreach

- Updated *PA Student Aid Guide* and many other publications available at pheaa.org



Outreach

- 14 Access Partners ready to assist with financial aid nights, FAFSA Completion events, and other outreach activities
- Contact Will Lindsey at wlindsey@pheaa.org

Questions? Comments?

- Elizabeth McCloud
 - 717.720.1600
 - emccloud@pheaa.org



PASFAA

October 23-25, 2017

Seven Springs Mountain Resort